

Minutes: Minutes of the Meeting of the Maules Creek Coal Community Consultative Committee held on **Thursday 14 May 2026** at the Boggabri Golf Club commencing at 12.15 pm.

Members Present: Elizabeth O’Hara (EOH) – Community Representative, Robyn Grover (RG) – Community Representative, Steve Eather (SE) – Community Representative, Libby Laird (LL) – Community Representative, David Gonzalez (DG) – WHC, Emma Bulkeley (EB) – WHC, Jabin de Keizer (JdeK) – WHC.

Apologies: Cr Brett Dickinson (BD) – Narrabri Shire Council

Observers: Anna Curral – WHC.

Independent Chair: Michael J. Silver OAM (MJS)

Agenda Item	Discussion	Action/By Whom
1.	Welcome and Apologies – MJS welcomed everyone to the meeting.	
2.	Acknowledgement of Country - The Chair acknowledged the Traditional Owners of the land on which the meeting is being held and their continuing connection to land, water, and culture, paying respects to their Elders past, present and emerging.	
3.	Declaration of Pecuniary or Other Interests – EOH holds a small quantity of Whitehaven shares. RG has a family member working at Maules Creek Coal Mine. MJS expenses as Chair are borne by the Proponent. There were no other declarations of interest.	
4.	Minutes of the Previous Meeting – The minutes of the meeting of 19 February 2026 were approved on 25 March 2026.	
5.	<p>Business Arising from the Previous Minutes</p> <p>5.1 General Business: 11.1 Penalty Notice – EOH commented that the minute did not accurately reflect the response to her question on the issue of a Penalty Infringement Notice (#3173542864). She had asked if the Proponent would disclose the value of the fine in the PIN issued by the NSW Environment Protection Authority (EPA) as it was not available on the EPA website or if she should find out another way. She noted that in response it was stated that it would not be disclosed as it was a legal matter, alleging that she should “<i>find another way</i>” to obtain the information. EB reiterated that no comment would be provided as it is considered a legal matter. MJS indicated he would discuss the matter with the DPHI.</p> <p>Chair’s note: <i>The minutes are not a verbatim record of the meeting. The original minute conveys the context and essence of the discussion and reflects the position of the Proponent in its response to the question viz. ‘this was a legal matter, as such no comment would be provided.’</i></p> <p><i>By way of background to this matter, the following is an extract from the address delivered by Whitehaven Chairman, The Hon. Mark Vaile AO to the Whitehaven Annual General Meeting in October 2025: “..... in late September 2025, a Penalty Infringement Notice (PIN) was issued by the NSW EPA in relation to a dust complaint at Maules Creek in February 2025. This PIN was received after FY25 reporting We are currently considering whether to appeal this PIN.”</i></p> <p>5.2 General Business: 11.3 Transitioning Off – EOH expressed disappointment at how the minute was recorded, noting that she had sourced the guest speaker for BTM Joint Mines meeting on 14 May 2026. MJS acknowledged her assistance.</p>	<p>ACTION: MJS to discuss the issue of PIN #3173542864 with DPHI.</p>
6.	<p>Actions</p> <p>Nil</p>	
7.	<p>Correspondence</p> <p>7.1 ERM - Independent Biodiversity Audit – Inviting submissions in respect of the Independent Biodiversity Audit for Maules Creek Coal Mine. MJS noted that the correspondence had been circulated to members and the closing date for submissions extended to 13 May 2026. No submissions had been received.</p> <p>7.2 Department of Planning Housing and Infrastructure – Providing an update on the roles and responsibilities of the chairperson, community members, and the proponents of Community Consultative Committees (CCC). MJS stepped the</p>	

	<p>Committee through the major points in the correspondence, noting that representations had been made by community members to the Planning Secretary regarding the operation of certain CCCs. MJS highlighted the comments regarding the recording of minutes, and the potential to engage a minute taker. He advised that due to previous difficulties in the recording of minutes, by a minute taker, at other CCC meetings he chairs, he has over the last six years assumed this role to ensure the content of the minutes are an accurate reflection of the intent and context of discussions at the CCC meeting. MJS also indicated he has not been able to locate the Terms of Reference for the Committee from documents provided by the previous Chair and would follow up on this prior to the next meeting. He noted that the roles and responsibilities of the CCC Chair were outlined in an attachment to the correspondence. MJS advised the correspondence would be distributed to the CCC.</p>	
<p>8.</p>	<p>Environmental Monitoring Report <i>A copy of the Monitoring Report is attached to the minutes.</i> The Environmental Monitoring Report was distributed to members prior to the meeting. There were no questions raised in relation to the report.</p>	
<p>9.</p>	<p>Proponent’s Presentation <i>EB introduced the Proponent’s Presentation. A copy of the presentation is attached to the minutes.</i></p> <p>Health and Safety The Committee noted the Health and Safety Performance data – DG noted the Total Recordable Injury Frequency Rate (TRIFR) for the 12 months to date was 1.9. This suggests a sound safety record.</p> <p>Environmental Monitoring</p> <p>Depositional Dust EB noted that the annual reporting period (12 monthly rolling annual average) remained satisfactory, being below the criteria of 4g/m2/month for the respective monitoring points. She noted that some samplers had been contaminated by bird dropping, decomposed insects or vegetable matter.</p> <p>HVAS EB advised that the High-Volume Air Sampler located at ‘Olivedene’ stayed well below the annual average. The Rolling Annual Average was recorded at 13.2 µg/m3, which is below the Annual Average Guideline of 30 µg/m3. EB highlighted one exceedance above the 24-hour guideline which occurred on 31 January 2026 related to a regional storm event and was not caused by the mine.</p> <p>TEOM 1 (PM10) EB advised that the annual rolling averages for TEOM 1 was 10.0 µg/m3 against the criteria of 30 µg/m3.</p>	

TEOM 3 (PM10)

The annual rolling average for TEOM 3 was 11.4 µg/m³ as at 31 March 2026. EB commented that there are some peaks on the graph due to localised activity not related to the mine.

Air Quality Monitoring

The Committee examined the Air Quality Monitoring Rolling 12 months graph noting that Maules Creek Mine is the light blue line in the lower section of the graph. EB noted that the Maules Creek monitor is consistently lower than the other monitors in the region however the entire region has experienced high dust levels over the last 12 months.

Monitoring Locations

The Committee noted the various groundwater monitoring locations.

Groundwater

EB noted that standing water levels had remained stable over the last 12 months, although there is a noticeable impact due to irrigation demands regionally from December to March.

Biodiversity Management

EB reported that the Whitehaven Biodiversity Feral Animal Control program has continued with the following results in the first quarter of 2026:

- 965 out of total 1,596 feral pigs removed were from the Maules Biodiversity properties;
- 457 out of the total 691 feral goats removed were from the Maules Biodiversity properties;
- 105 out of total 210 Canid Pest Ejectors (1080) triggered, or foxes removed were from the Maules Biodiversity properties.

EB also advised that work on noxious weed control was ongoing with spot spraying/jetting on the Maules Biodiversity Properties.

EB outlined the other biodiversity projects undertaken in the first quarter of 2026 plus works and other programs scheduled for the second quarter.

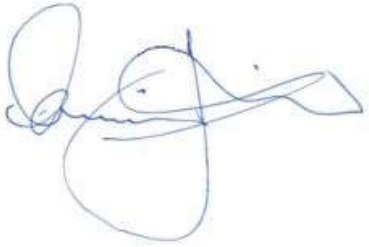
AC advised on the completion of recent improvements to the 'Onavale' Cultural Heritage Precinct, which will support a cultural location and meeting place for the local Aboriginal community.

Project Continuation**Assessment and Determination Process**

	<p>JdeK provided an overview of the status of the Maules Creek Continuation Project.</p> <p>JdeK advised that responses to public, organisations and government submissions were made within a Submissions Report in October 2025. Subsequently, Whitehaven provided a response to various agencies feedback on the Submissions Report in late 2025 and further responses in early 2026. JdeK added that additional groundwater monitoring bores are being established on Whitehaven owned land to support future groundwater monitoring. The drilling program will continue over coming weeks.</p> <p>JdeK stepped the Committee through the application determination process, noting that the application will be referred to the Independent Planning Commission (IPC) for determination.</p> <p>EOH enquired where the additional groundwater monitoring bores are being located. JdeK indicated generally in the vicinity of Back Creek but will provide a map confirming the locations.</p> <p>Community</p> <p>Aboriginal Representative on the CCC</p> <p>JdeK reported that advertisements continue to run seeking nominations for an Aboriginal representative on the Community Consultative Committee. No nominations have been received.</p> <p>Community Investment</p> <p>JdeK advised that \$100,982 has been provided to sixteen community organisations over the past three months. He made specific mention of support for the Gunnedah and Narrabri Shows as well as hosting external visitors attending the Boggabri Drivers’ Campfire and the Kurrumbede Open Day. JdeK also noted that funding support has extended regionally, to groups such as the Inverell Bear Eaters in the conduct of Aboriginal Elders Olympics.</p>	<p>ACTION: JdeK to provide a map of the additional groundwater monitoring bores.</p>
<p>10.</p>	<p>Other Agenda Items</p> <p>10.1 Water Availability – EOH enquired what stress on water availability is being generated by the mine. EB advised that there is sufficient water available for mining related activities. JdeK noted that in terms of consumption that on average, Whitehaven’s four (4) NSW coal mines use about the same amount of water as a medium size cotton farm. EB made the point that a proposed water pipeline between the MCCM pipeline network and the approved Vickery Coal Mine to Tarrawonga Coal Mine pipeline is part of the Continuation Project proposal, however it is not approved.</p>	<p>.</p>
<p>11.</p>	<p>General Business</p> <p>Nil</p>	
<p>12.</p>	<p>Next meeting</p> <p>The next meeting is scheduled for 6 August 2026.</p>	

Meeting Closed: 1.02 pm.

Approved:

A handwritten signature in blue ink, appearing to read 'Michael J. Silver', with a large loop at the end.

Michael J. Silver OAM
Independent Chair

10 June 2026

Appendix 1: Actions

Action No.	Description	Date Raised	Page No.	Status
1	MJS to review February 2024 minutes.	15.05.24	2	COMPLETED 24.06.24
2	MJS to respond to R. Druce that the matter needs to be taken up with NSC and the RFS	15.05.24	2	COMPLETED 24.06.24
3	MJS to respond to Mr Laird that there are fundamental issues that need to be addressed.	15.05.24	2	COMPLETED 24.06.24
4	EM to advise how groundwater data is sourced.	15.05.24	3	COMPLETED 26.08.24
5	MJS to contact UNSW regarding availability of ground water data.	15.05.24	3	COMPLETED 16.08.24
6	DS to provide locations of monitoring bores.	15.05.24	4	COMPLETED 26.08.24
7	MJS to discuss environmental representative on the CCC with DPIE	15.05.24	4	COMPLETED 08.08.24
8	MJS to advise DPHI of concerns raised by CCC members regarding the IEA process.	13.11.24	2	COMPLETE 19.02.26
9	EB to confirm current locations of TEOM monitors	13.11.24	4	COMPLETED 13.02.24
10	MJS to write to DPHI detailing the potential breach of the conditions of consent in respect of membership of the CCC.	13.11.24	3	COMPLETE 22.11.24
11	JdeK to provide responses to questions on Methane Emissions and Methane Abatement.	13.11.24	6	COMPLETE 16.01.25
12	EB to advise whether there will be forest land clearing in February 2025	13.11.24	7	COMPLETE 13.02.25
13	EB to provide numbers and genus of euthanised fauna during 2024	13.11.24	7	COMPLETE 13.02.25
14	EB to confirm employee transfer numbers from WCC mine to MCC mine	13.11.24	7	COMPLETE 13.02.25
15	EB to advise the water bore that engaged in the standing water level spike in September 2024.	13.02.25	5	COMPLETE 15.05.25
16	EB to ensure that on all future maps of the mine environs presented to the CCC that property names are noted on the maps.	13.02.25	6	COMPLETE 15.05.25

17	EB to check whether a property sale in the area was to Whitehaven.	13.02.05	6	ONGOING
18	EB to provide detail on the depth of the highwall and associated dimensions of the proposed final void relative to current approved void	13.02.25	6	COMPLETE 15.05.25
19	EB to provide area to be cleared of vegetation associated with the Continuation Project.	13.02.25	7	COMPLETE 15.05.25
20	MJS to prepare an amended meeting program for the May CCC meetings.	13.02.25	8	COMPLETE 23.04.25
21	EB to advise the scale and depth of the current void.	15.05.25	2	COMPLETED 24.07.25
22	EB to provide a link to the Environmental Report.	15.05.25	5	COMPLETE 24.07.25
23	EB to provide the number of exploration holes drilled since April 2024 and their distribution.	15.05.25	6	COMPLETE 24.07.25
24	MJS to follow up a response from DPHI in relation to Action 8.	04.09.25	2	COMPLETE 19.02.26
24	That DG advise the depth of the bore holes in the vicinity of Horse Arm and Middle Creeks	04.09.25	5	COMPLETE 30.10.25
25	EB to table an A3 map of the exploration holes at the next meeting.	30.10.25	3	COMPLETE 19.02.26
26	MJS to seek advice from DPHI on groundwater reporting requirements.	30.10.25	5	COMPLETE 19.02.26
27	EB to provide a presentation on bat tracking at the next meeting	30.10.25	6	COMPLETE 19.02.26
28	MJS to discuss the issue of PIN #3173542864 with DPHI.	14.05.26	2	
29	JdeK to provide a map of the additional groundwater monitoring bores	14.05.26	5	

Maules Creek Coal Mine Community Consultative Committee Meeting #53

Environmental Monitoring Report For the Q1 period, January – March 2026

Attended Noise Monitoring

Maules Creek Coal (MCC) engaged an independent acoustic consultant to conduct LAeq (15minutes) and LA1 (1 minute) attended noise monitoring at six monitoring locations on site.

A. NOISE GENERATED BY MCCM AGAINST OPERATIONAL DAY & NIGHT NOISE CRITERIA; January - March 2026.

The results show that MCCM is within EPL 20221 compliance limits, that operations did not exceed the applicable; LAeq (15minute) 35dB Criteria, LA1 (1Minute) 45dB Criteria and the EPA's Noise Policy for Industry compliance guidelines.

Table 1 – January Noise Monitoring

Location	Start date and time	Wind		Stability class	Very enhancing? ¹	Limits, dB ¹		Site levels, dB ^{2,3}		Exceedances, dB	
		Speed m/s	Direction ⁴			L _{Aeq,15minute}	L _{A1,1minute}	L _{Aeq,15minute} ⁵	L _{A1,1minute} ⁵	L _{Aeq,15minute}	L _{A1,1minute}
NM1	20/01/2026 22:30	3.8	120	D	Yes	40	50	IA	IA	Nil	Nil
NM2	20/01/2026 23:30	3.4	92	D	Yes	44	50	<20	<25	Nil	Nil
NM3	20/01/2026 23:18	2.7	93	D	No	35	45	25	28	Nil	Nil
NM4	20/01/2026 23:00	3.5	104	D	Yes	40	50	<20	<20	Nil	Nil
NM5	20/01/2026 22:00	6.1	137	D	Yes	40	50	IA	IA	Nil	Nil
NM6	20/01/2026 23:58	3.2	94	D	Yes	40	50	<20	<20	Nil	Nil

Table 2 – February Noise Monitoring

Location	Start date and time	Wind		Stability class	Very enhancing? ¹	Limits, dB ¹		Site levels, dB ^{2,3}		Exceedances, dB	
		Speed m/s	Direction ⁴			L _{Aeq,15minute}	L _{A1,1minute}	L _{Aeq,15minute} ⁵	L _{A1,1minute} ⁵	L _{Aeq,15minute}	L _{A1,1minute}
NM1	3/02/2026 22:30	2.0	161	F	No	35	45	IA	IA	Nil	Nil
NM2	3/02/2026 23:30	1.9	135	D	No	39	45	<20	<20	Nil	Nil
NM3	3/02/2026 23:20	2.0	140	E	No	35	45	IA	IA	Nil	Nil
NM4	3/02/2026 23:00	2.0	154	E	No	35	45	<20	<20	Nil	Nil
NM5	3/02/2026 22:00	1.2	97	F	No	35	45	IA	IA	Nil	Nil
NM6	3/02/2026 23:57	3.9	93	D	Yes	40	50	<20	<20	Nil	Nil

Table 3 – March Noise Monitoring

Location	Start date and time	Wind		Stability class	Very enhancing? ¹	Limits, dB ¹		Site levels, dB ^{2,3}		Exceedances, dB	
		Speed m/s	Direction ⁴			L _{Aeq,15minute}	L _{A1,1minute}	L _{Aeq,15minute} ⁵	L _{A1,1minute} ⁵	L _{Aeq,15minute}	L _{A1,1minute}
NM1	17/03/2026 22:30	0.4	65	F	No	35	45	<20	<25	Nil	Nil
NM2	17/03/2026 23:30	0.5	101	F	No	39	45	30	36	Nil	Nil
NM3	18/03/2026 00:25	0.7	146	F	No	35	45	<25	40	Nil	Nil
NM4	17/03/2026 23:00	0.4	189	F	No	35	45	<25	32	Nil	Nil
NM5	17/03/2026 22:00	0.6	198	F	No	35	45	<20	26	Nil	Nil
NM6	17/03/2026 23:57	0.6	228	F	No	35	45	<20	<25	Nil	Nil

Wind Direction during Attended Monitoring

Wind direction data is collected from the Maules Creek Coal Mine (MCCM) Automated Weather Station (AWS). Wind data for the duration of the attended monitoring assessment, recorded at the MCCM AWS is presented in the table below.

Table 4 - Prevailing Wind Direction

Monitoring Date	Prevailing Wind Direction
January	SE
February	SE
March	ESE

Blast Monitoring

There was 25 blasts at MCCM during Q1 2026. All blast monitoring results recorded within the reporting period have complied with applicable overpressure and ground vibration limits specified in the respective approvals.

Table 5 – Blast Results Summary

Parameter	Units	Frequency	Number	Average	Max	100% Limit	Exceedance (Yes / No)
Noise	dB	All	25	94.86	107.50	120	No
Vibration	mm/s		25	0.12	0.47	10	No

Air Quality

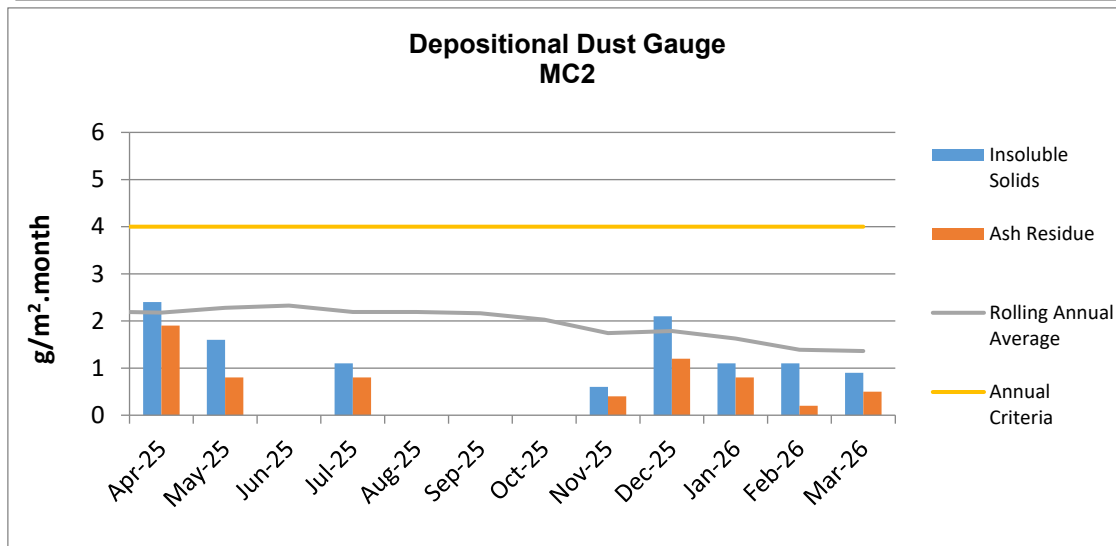
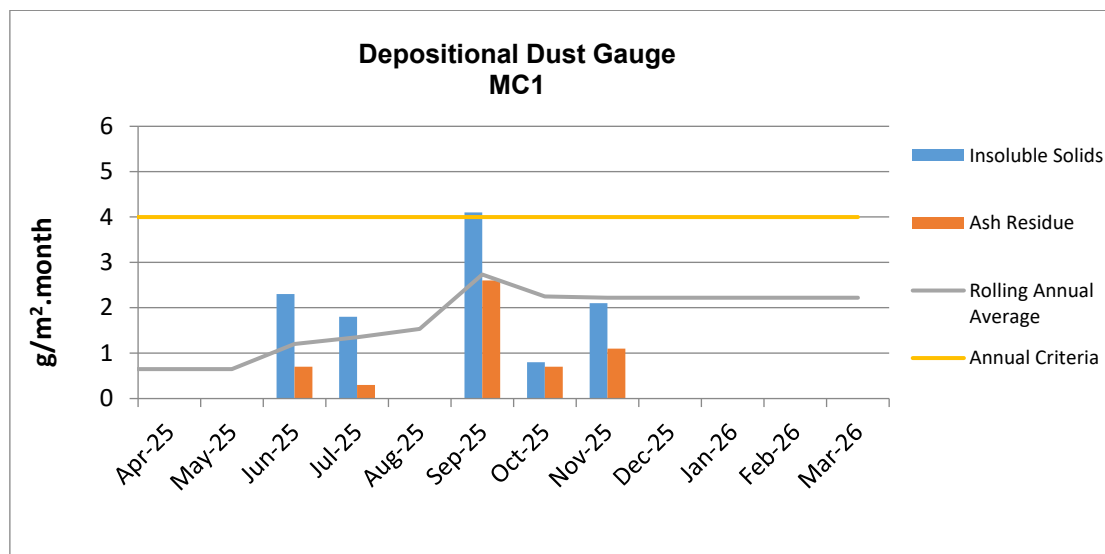
A. Total Depositional Dust

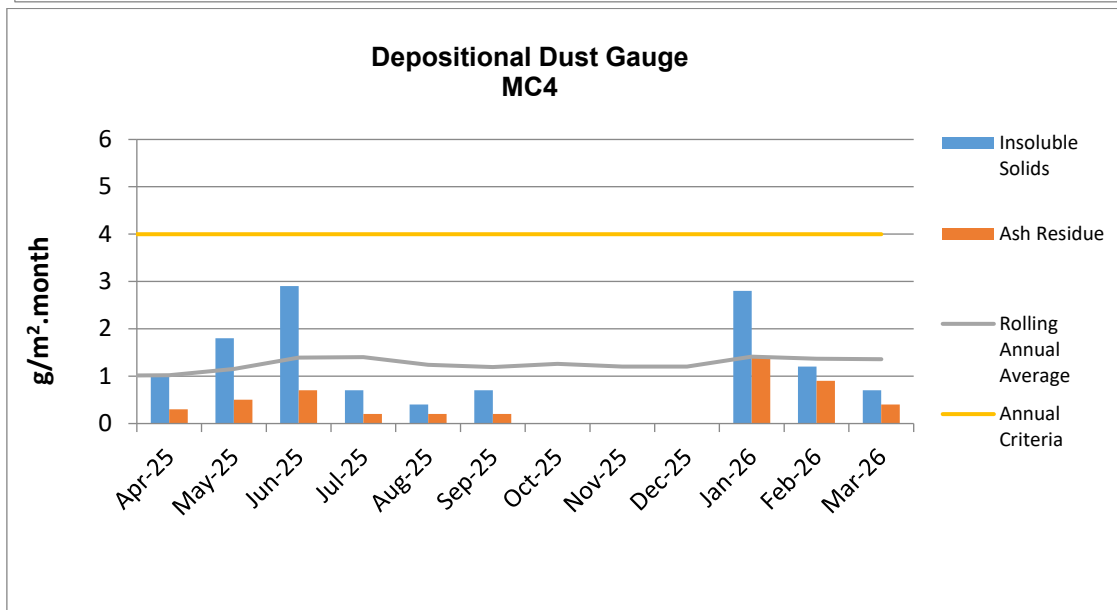
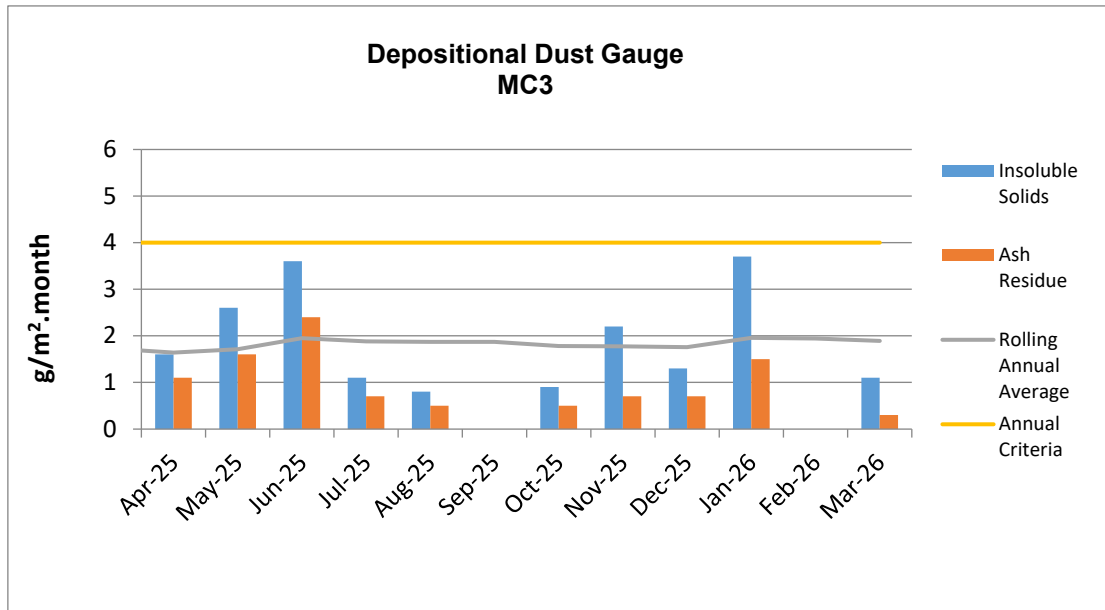
The 12 monthly rolling annual average remains below the relevant Project Approval (PA 10_0138) criteria of 4g/m²/month for the respective monitoring points.

Table 6 – Deposited Dust Gauge Results [g/m²/month]

MONTH	MC1	MC2	MC3	MC4
January	9.9c	1.1	3.7	2.8
February	10.4c	1.1	7.6c	1.2
March	4.8c	0.9	1.1	0.7
12 MONTH ROLLING AVERAGE	2.2	1.4	1.9	1.4

^c samples contaminated by bird dropping, decomposed insects or vegetable matter.



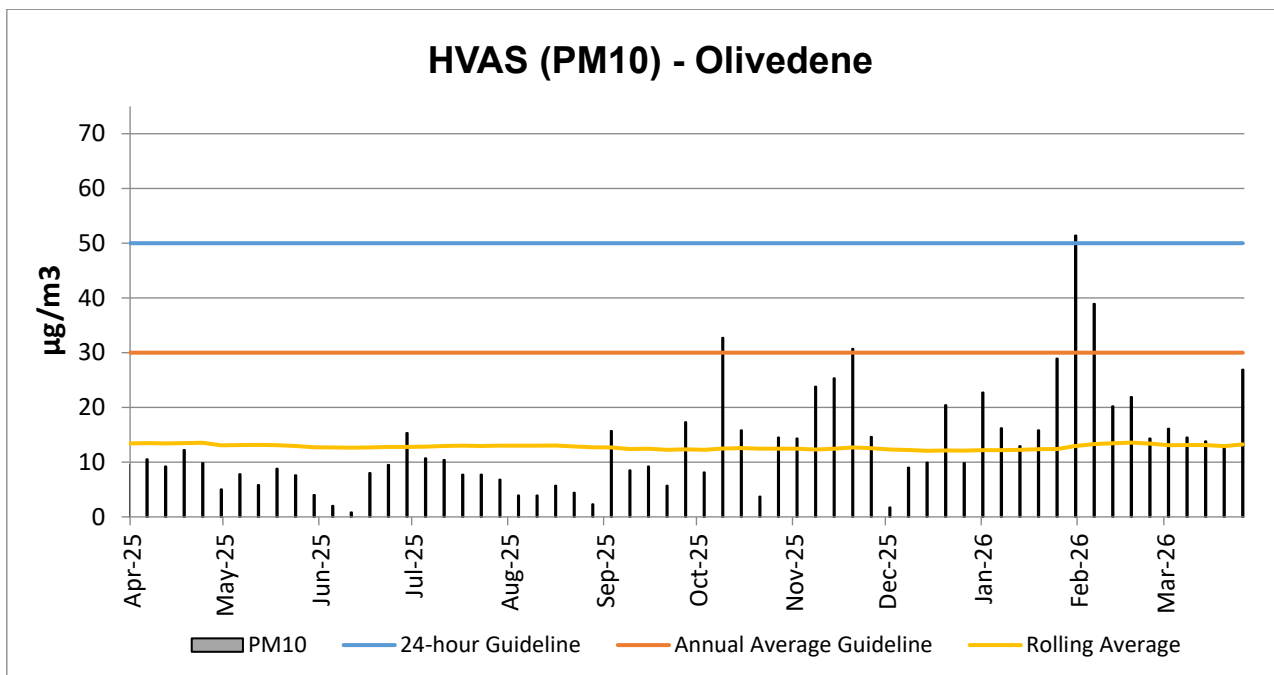


* Blank cells indicate sample periods where the sample has been contaminated and excluded from the results tables due to contaminated material (insect larvae, bird droppings, vegetation etc.).

B. High Volume Air Sampling (HVAS)

The HVAS monitor is located on the property 'Olivedene,' a mine owned property on Therribri Road.

HVAS PM₁₀ Rolling Annual Average as of the 31st of March 2026 was **13.2 µg/m³**, which is below the Annual Average Guideline of 30 µg/m³.



C. TEOM - PM10 Results

The annual rolling average for PM10 at the Maules Creek Coal Mine for TEOM1 was **10.0 µg/m³** and at TEOM3 was **11.4 µg/m³** these are both below the Project Approval annual average criteria of 30µg/m³ as shown in the following figure.

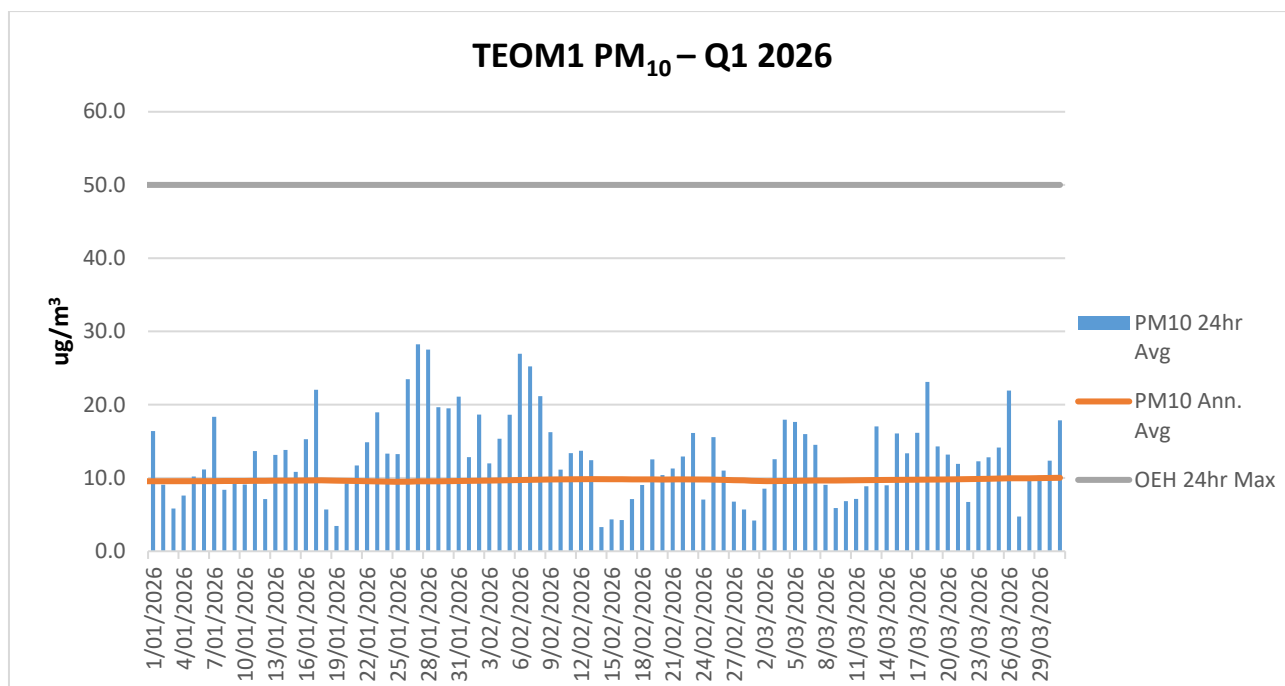


Figure 1 - TEOM Result – Particulate Matter PM₁₀µg/m³

* Blank columns indicate sample periods where there was either power outage, maintenance or other related causes.

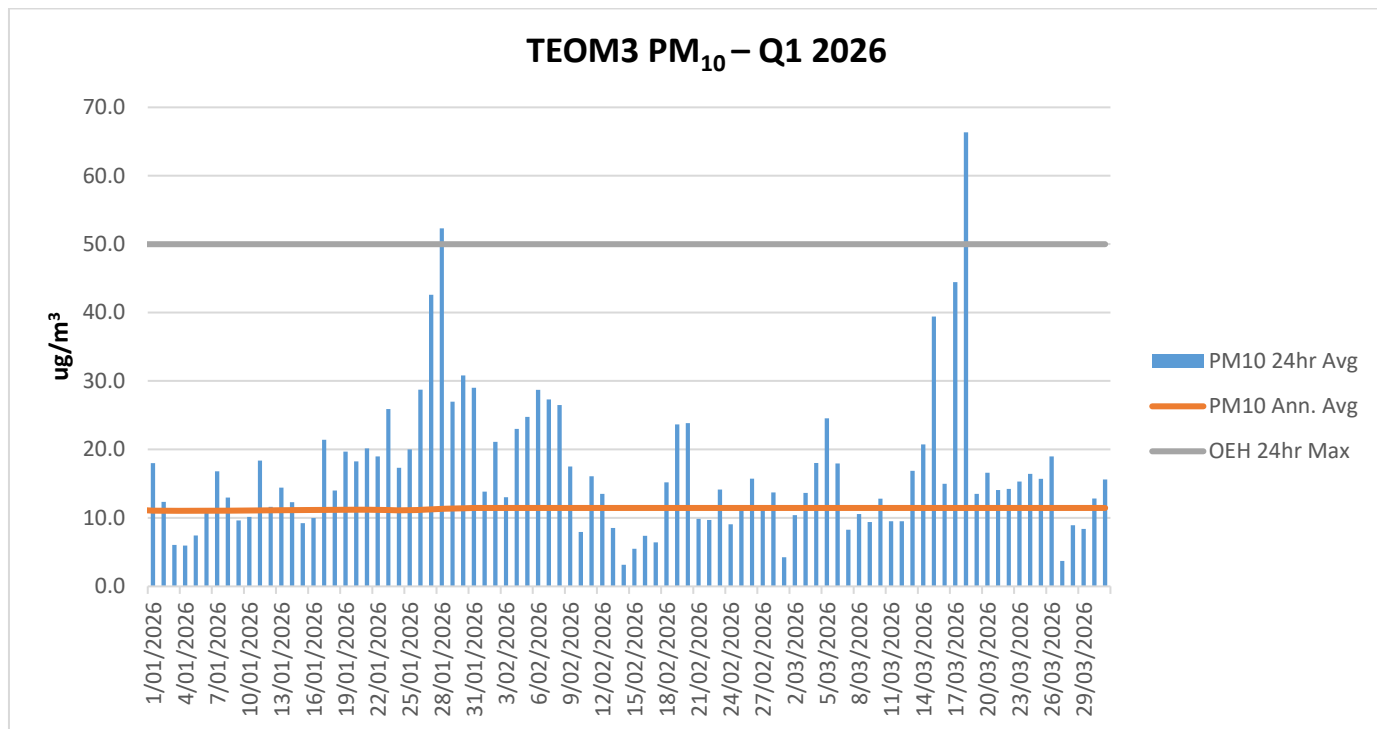
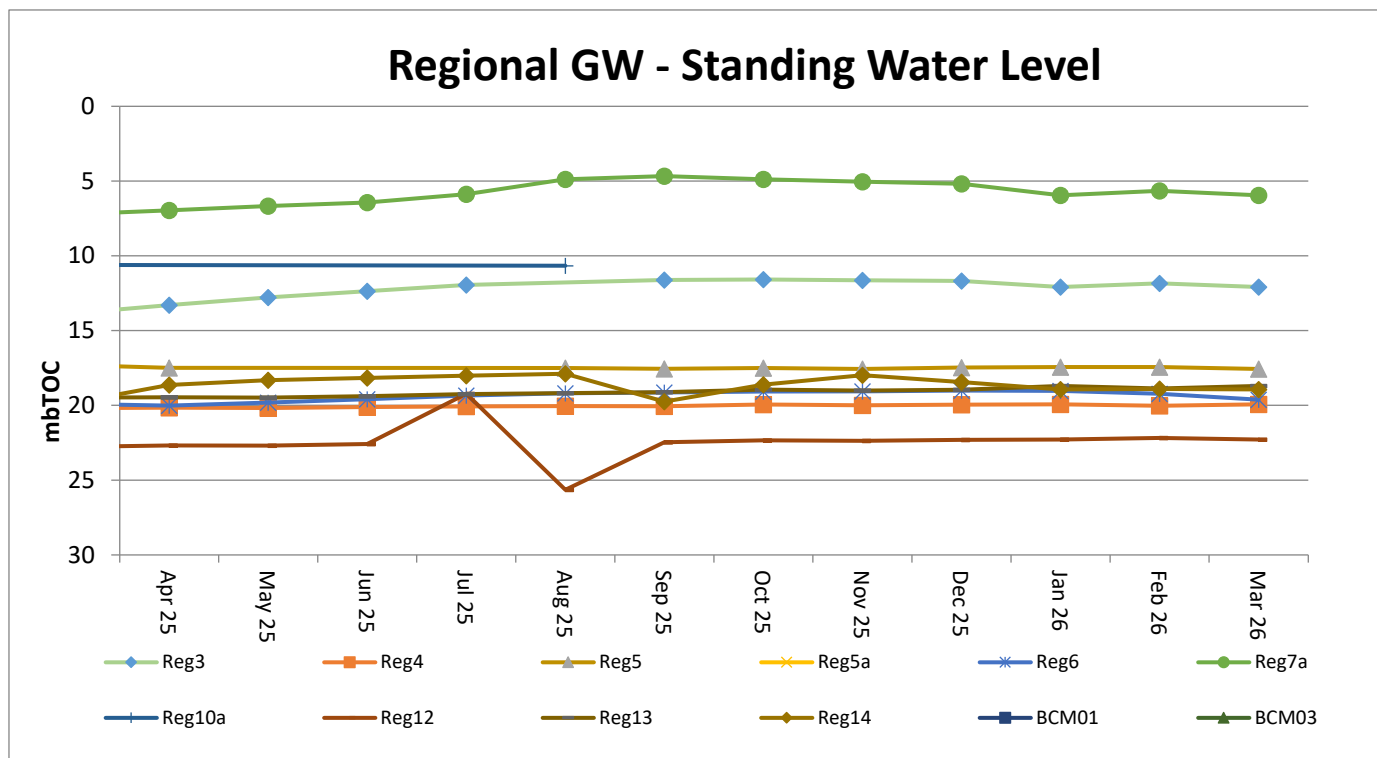


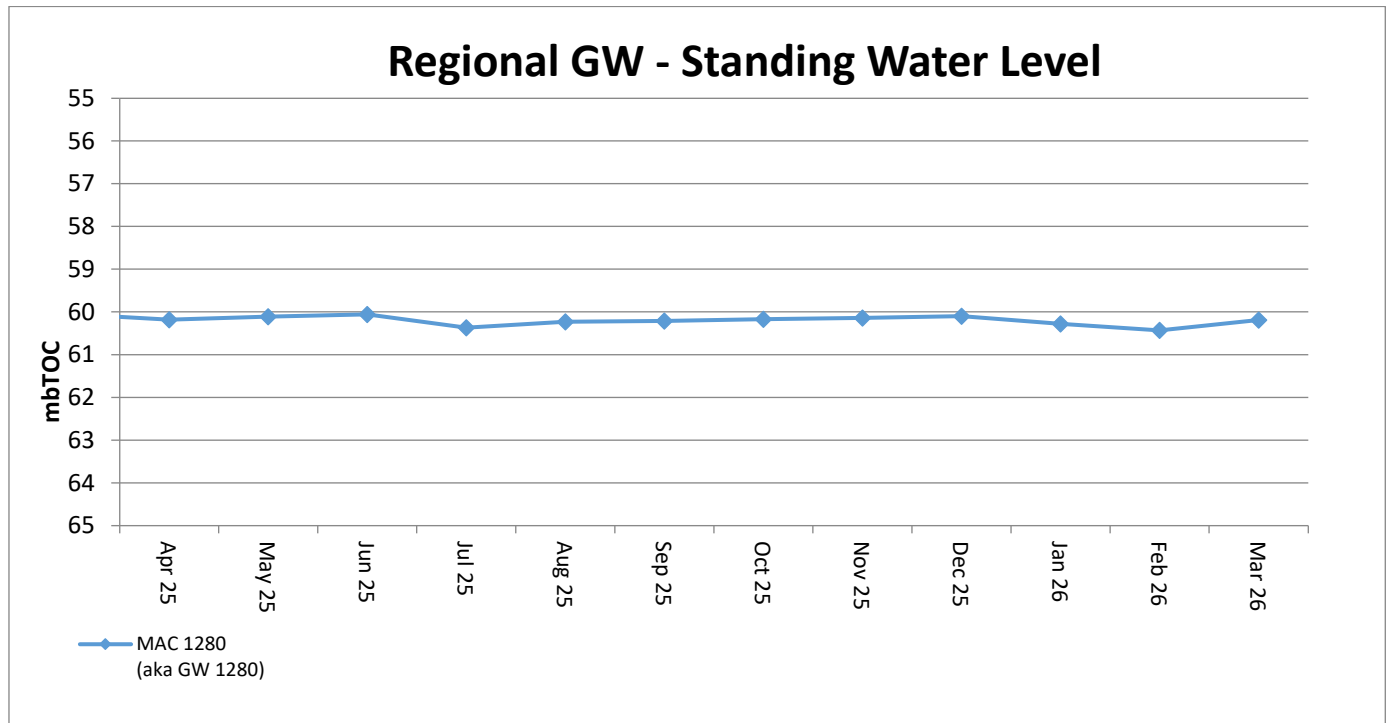
Figure 2 - TEOM Result – Particulate Matter PM₁₀ug/m³

* Blank columns indicate sample periods where there was either power outage, maintenance or other related causes. Water Monitoring

A. Groundwater

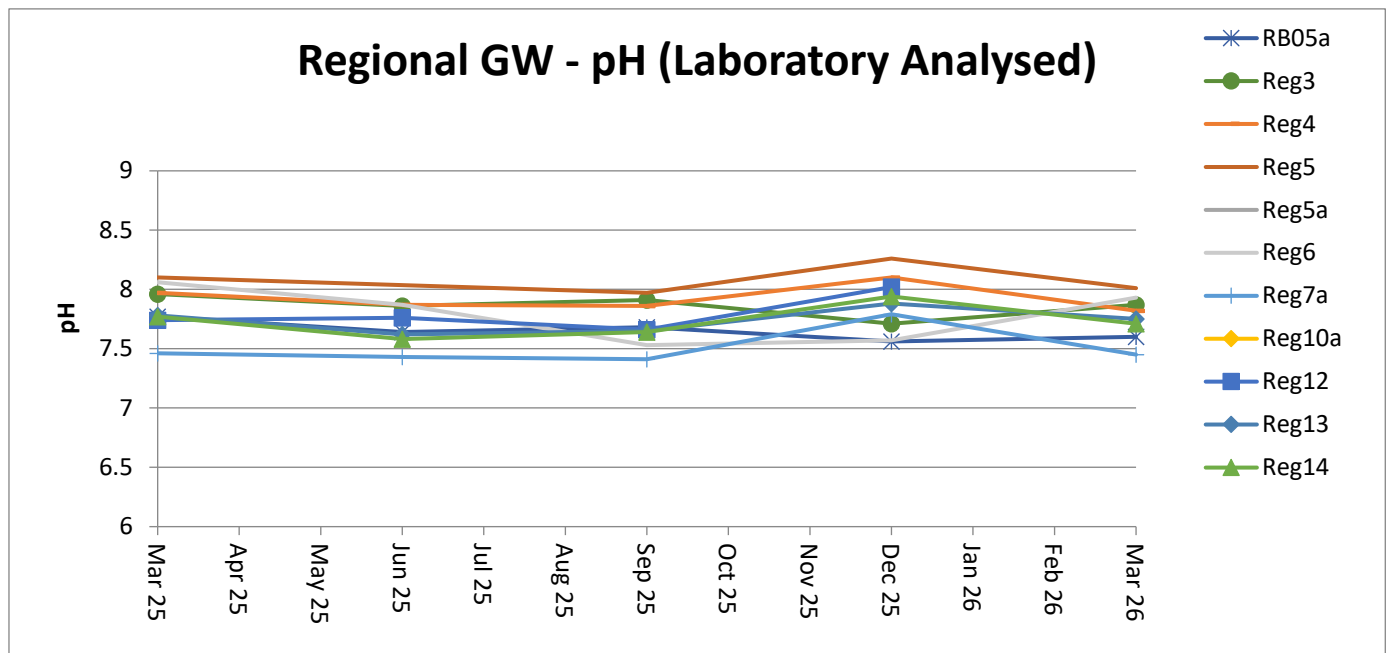
Groundwater monitoring results in open standpipe piezometers show levels to be relatively stable. The Regional bores were installed between Q4, 2013 and Q1, 2014. BCM01, BCM03, Reg10 are shallow bores which have remained dry since construction in 2013.





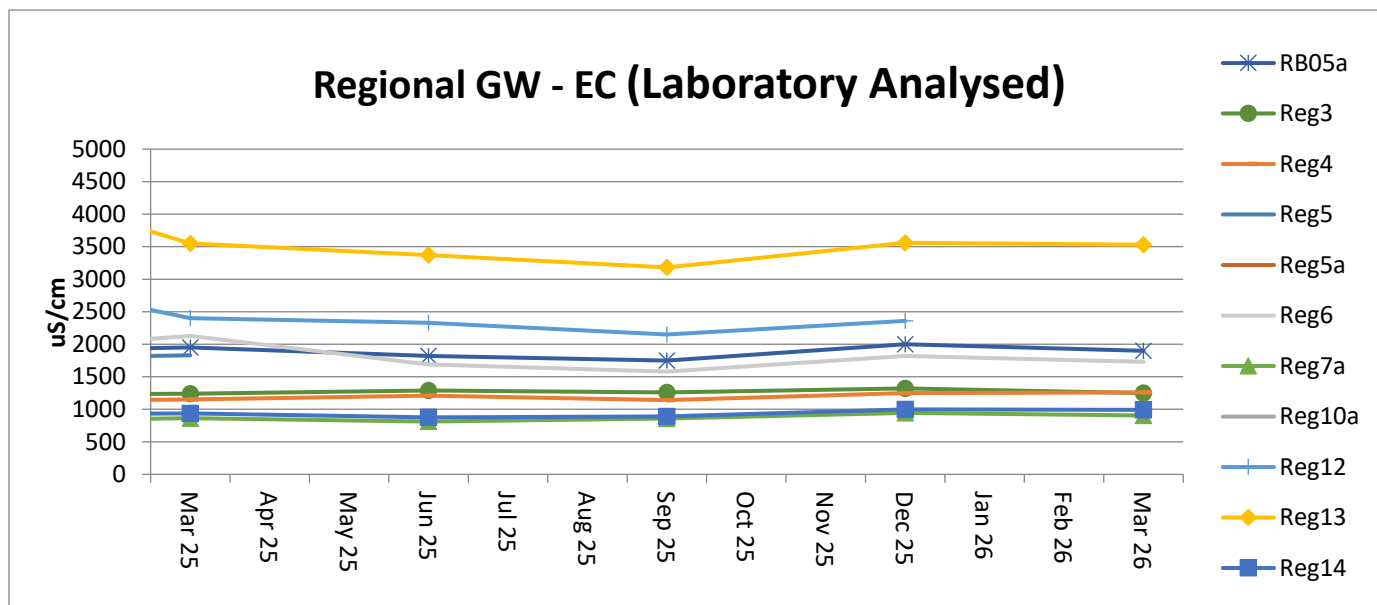
Acidity / Alkalinity (pH)

Over the past twelve months pH readings across the regional bores have remained static with very little fluctuation.



Electrical Conductivity

Laboratory Electrical Conductivity (EC) levels are all within historic groundwater EC range of 500_{µs/cm} to 2,500_{µs/cm}, with the exception of monitoring bore Reg13 which has a historic groundwater EC range of 2,500_{µs/cm} to 4,100_{µs/cm}.

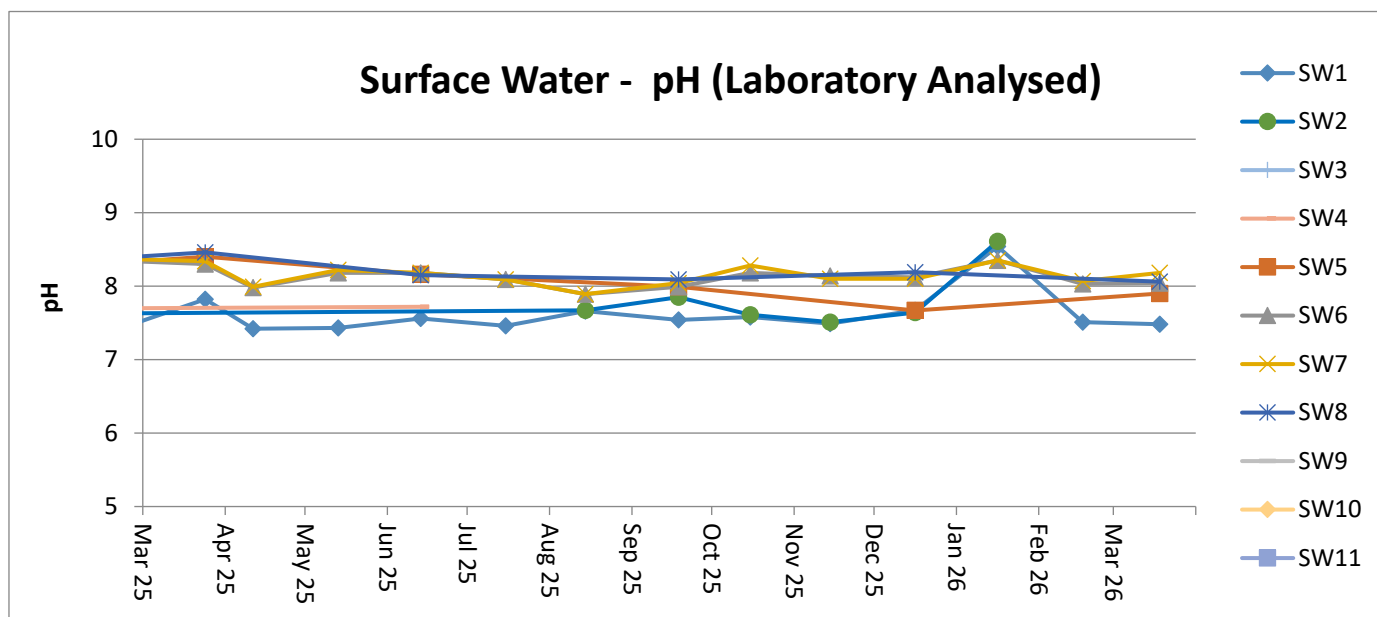


B. Surface Water – Creeks and Rivers

Routine surface water monitoring is conducted in surrounding creeks and rivers on a monthly basis. Results for parameters including pH, EC and Total Suspended Solids (TSS) are shown in the figures below.

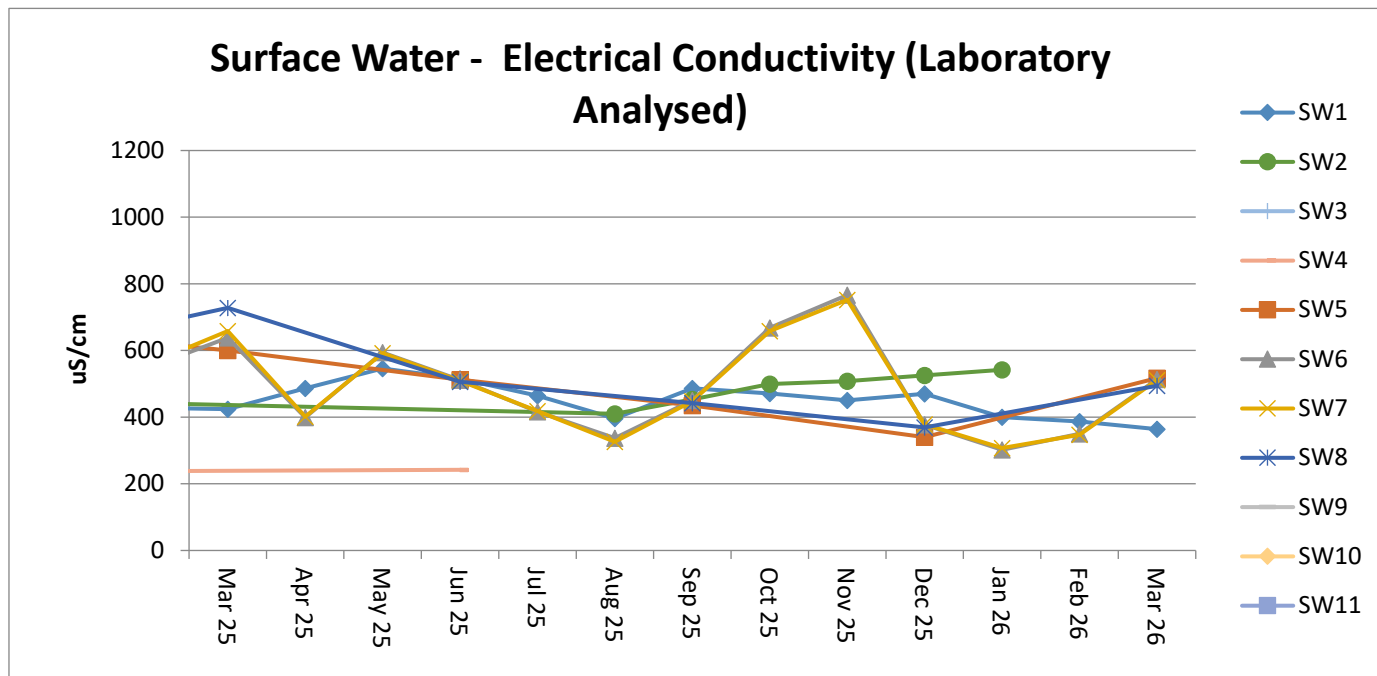
Acidity / Alkalinity (pH)

Monitoring results for pH in creeks and rivers surrounding MCCM are all trending within the ANZECC range for Irrigation, Ecosystem Health and Recreation.



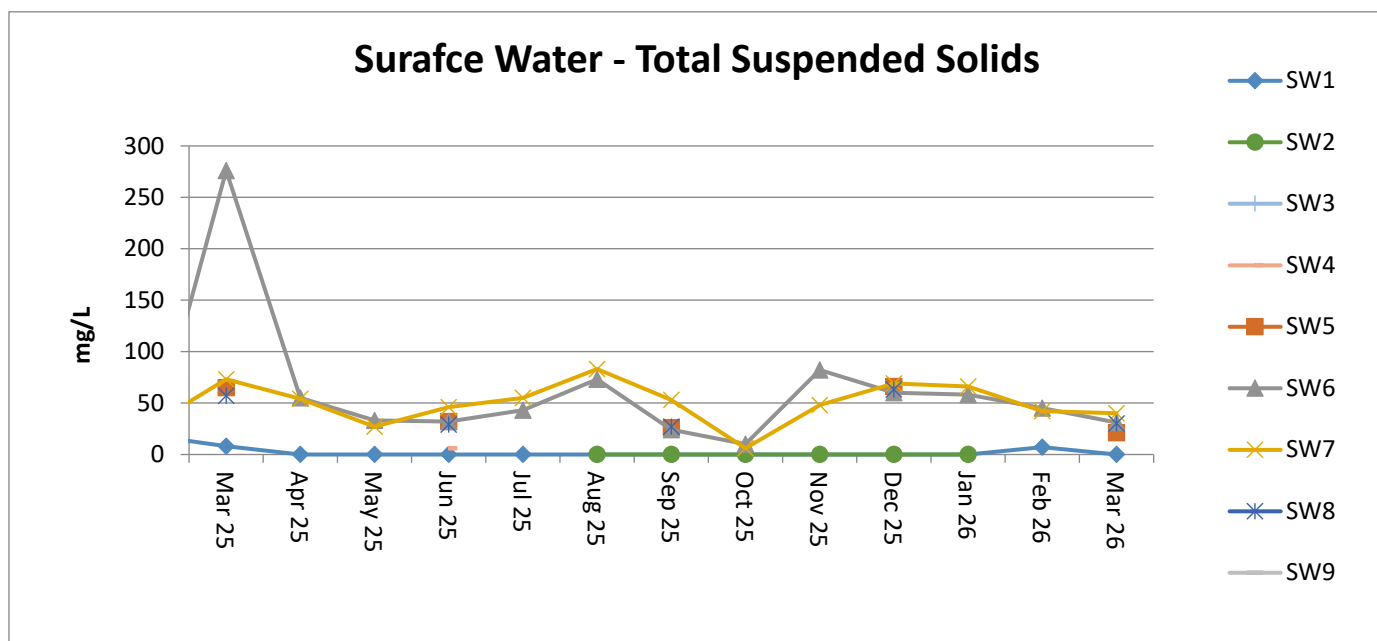
Electrical Conductivity

Surface water EC trends have remained consistent with SW5, SW6, SW7 and SW8 all historically variable. SW5, SW6, SW7 and SW8 are points along the Namoi River which are subject to regulated and variable flow regimes.



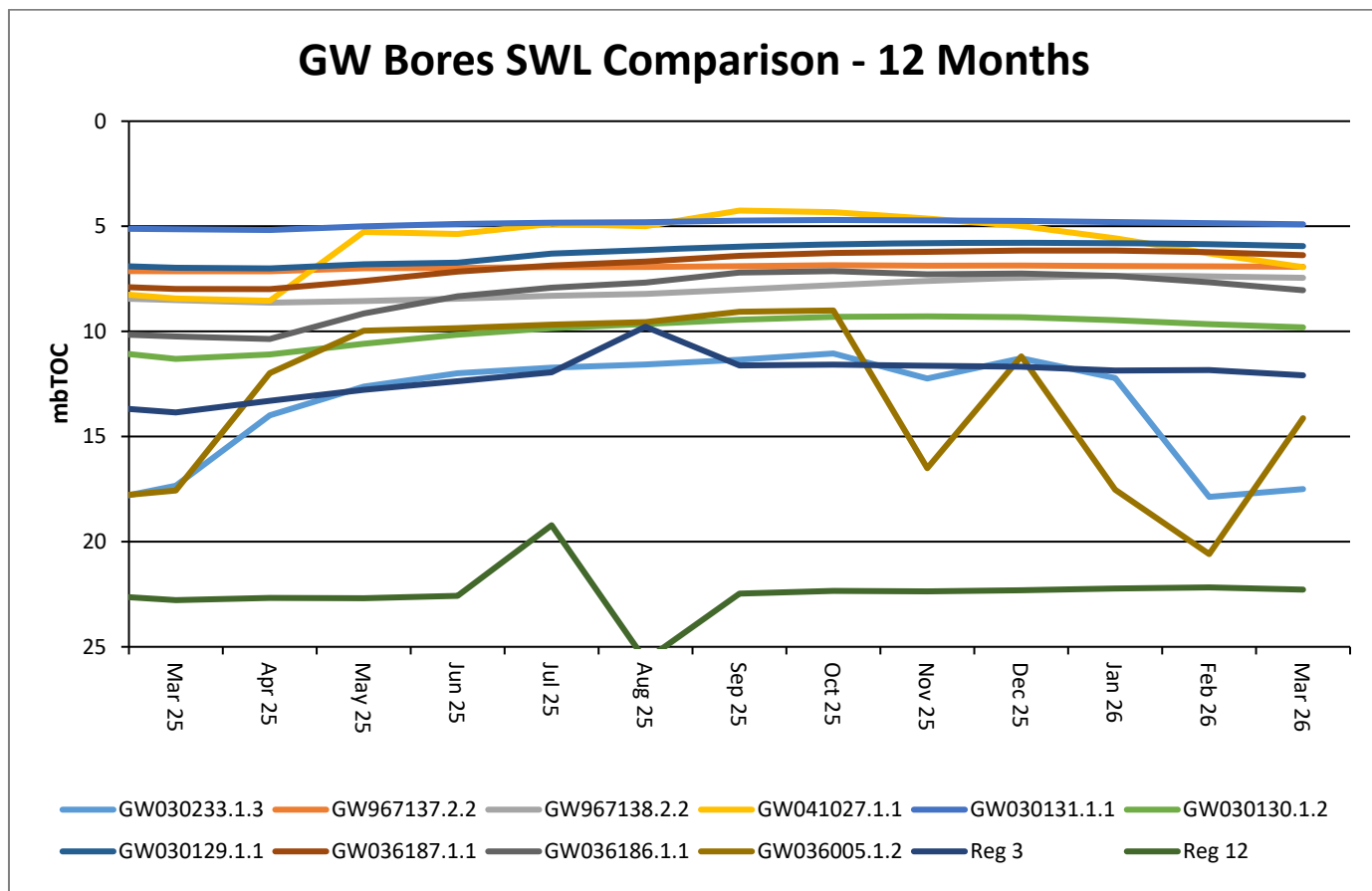
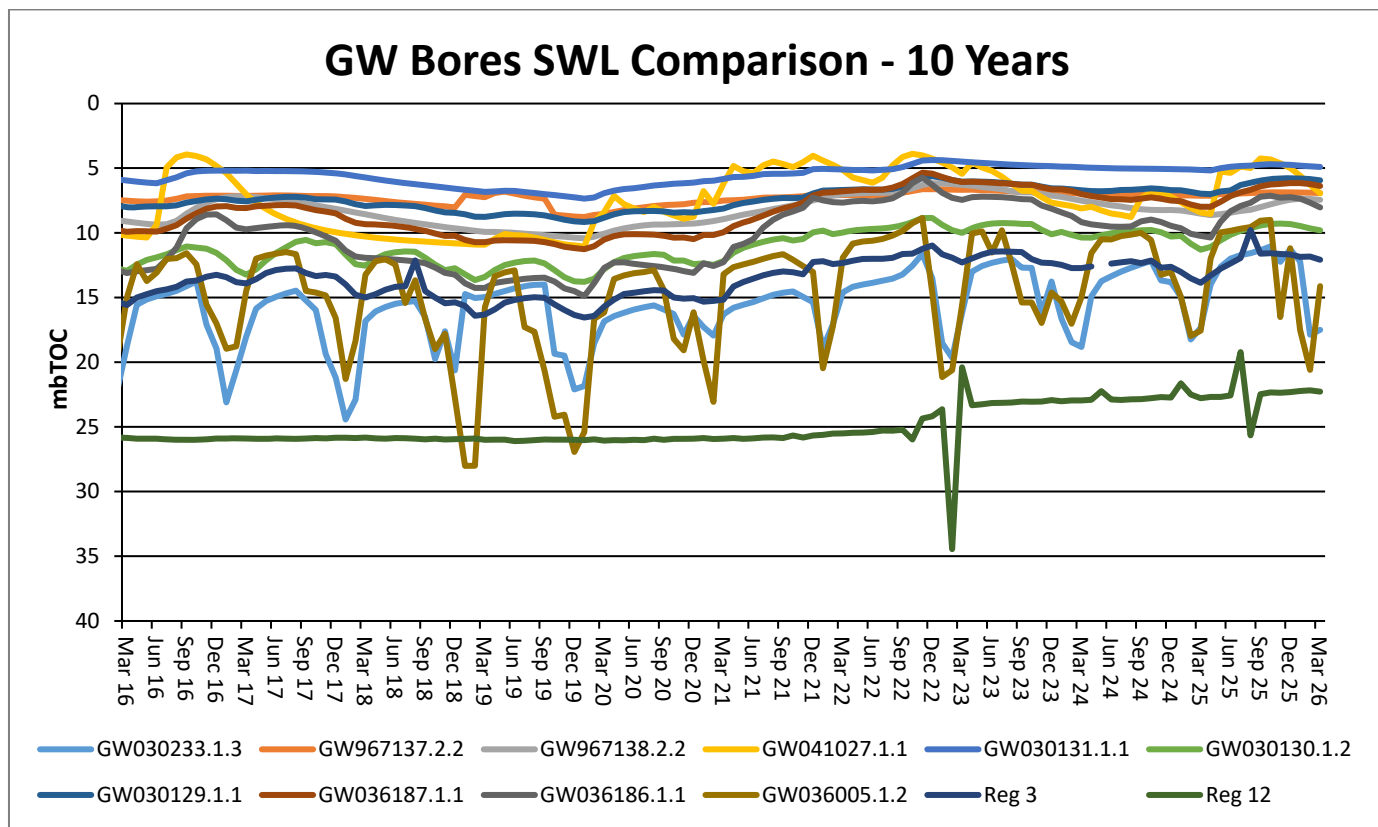
Total Suspended Solids (TSS)

Surface water TSS trends have remained generally consistent with historical results. SW5, SW6, SW7 and SW8 are historically variable as they are located along the Namoi River which is subject to regulated and variable flow regimes.



Regional Groundwater monitoring

Maules Creek Coal Mine monitors regional bores across the region.



Rehabilitation

Progressive rehabilitation works are ongoing. MCC is on track to complete CY26 rehabilitation in accordance with the Forward Program.

Feral Animal Management

Most recent routine Whitehaven Biodiversity Feral Animal Control program (January to March 2026) results were:

- 965 out of total 1,596 feral pigs removed were from the Maules Biodiversity properties;
- 457 out of the total 691 feral goats removed were from the Maules Biodiversity properties;
- 105 out of total 210 Canid Pest Ejectors (1080) triggered, or foxes removed were from the Maules Biodiversity properties.

Weed Control

During January to March 2026 the following weed control was undertaken via spot spraying/jetting on the Maules Biodiversity Properties:

- 36ha of Woody Weeds (Sweet Briar, Blackberry, Tiger Pear and Prickly Pear) were sprayed.
- 21.8ha of Grasses (Coolatai Grass, African Lovegrass and Rhodes Grass) were sprayed.
- 18.2ha of Broadleaf Weeds such as Bathurst Burr, Noogoora Burr and Cobblers Peg were sprayed.
- 267ha of tracks sprayed as part of the track maintenance.

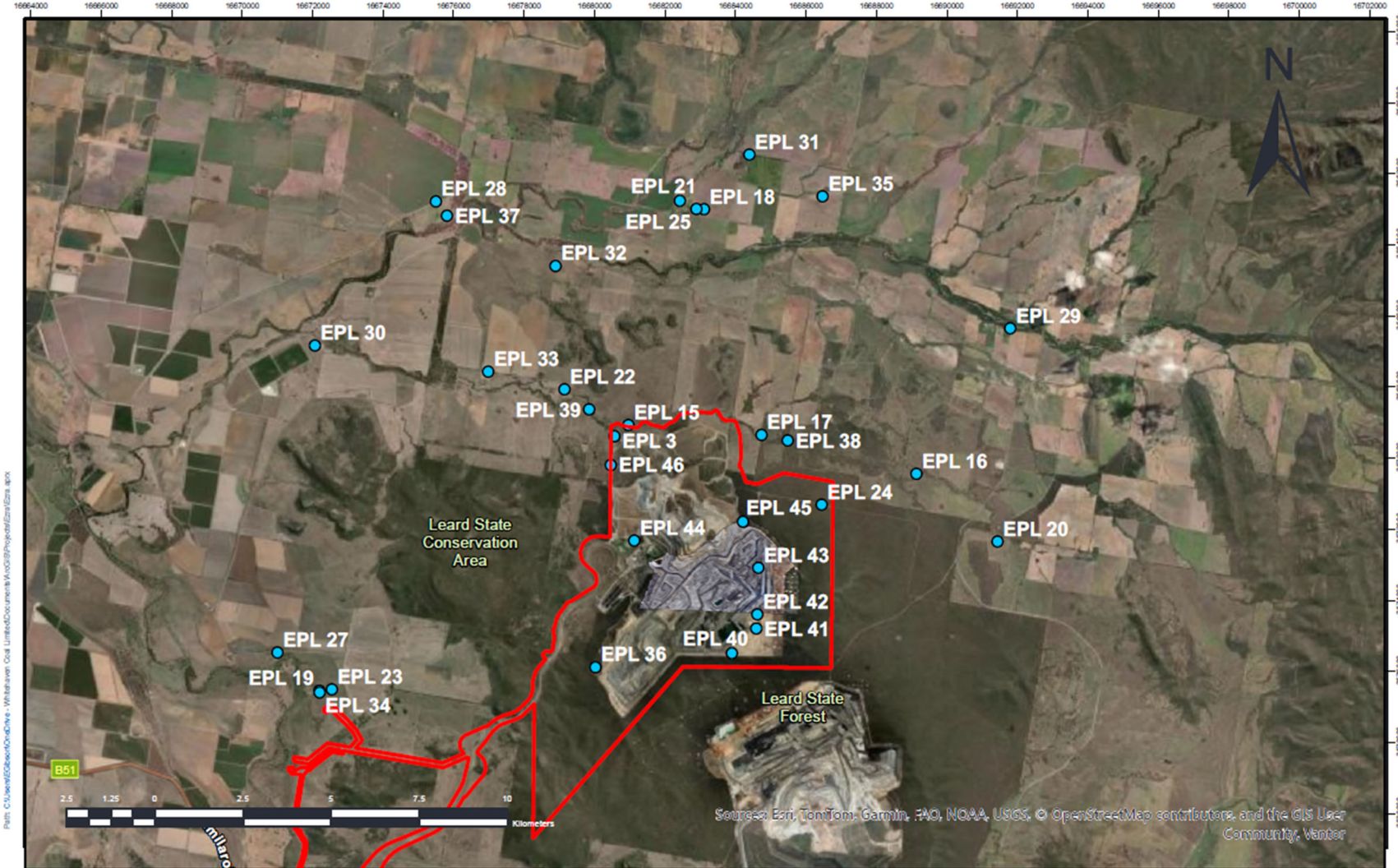
Upcoming Biodiversity Projects and Works

- Continue Pest Animal Management Program April to June 2026
- Continue Seasonal Weed Control Programs
- Continue Firebreak Track Maintenance Program
- Continue Property Development for Track and Fencing Works
- Continue Threatened Flora Translocation Program maintenance
- Continue Annual Ecological Burn Program
- Commence Revegetation Tree Planting

Community Complaints

There was one community complaints registered during the quarter, all community complaints are available on the company website at <https://whitehavencoal.com.au/our-business/our-assets/maules-creek-mine/>.

Date Received	Method	Category	Nature of Compliant	MCCM Response
27/01/2026	Phone	Dust	Local Land Holder called regarding dust levels in the Maules Creek Area.	MCC reviewed the data and provided a response to the landholder.



EPL 20221 Monitoring Locations - 16/03/2026

- EPL Monitoring Locations
- Mod 9 Boundary

Maules Creek Coal



Scale: 1:143,695
 Date Created: 17/03/2026
 Spatial Reference:
 WGS 1984 Web Mercator Auxiliary Sphere

Disclaimer: Map for reference only and subject to survey. MCC makes no guarantee of the accuracy of this map and data within. MCC shall have no liability for any decisions made or actions taken based upon this map.

Maules Creek Coal Mine

CCC Meeting

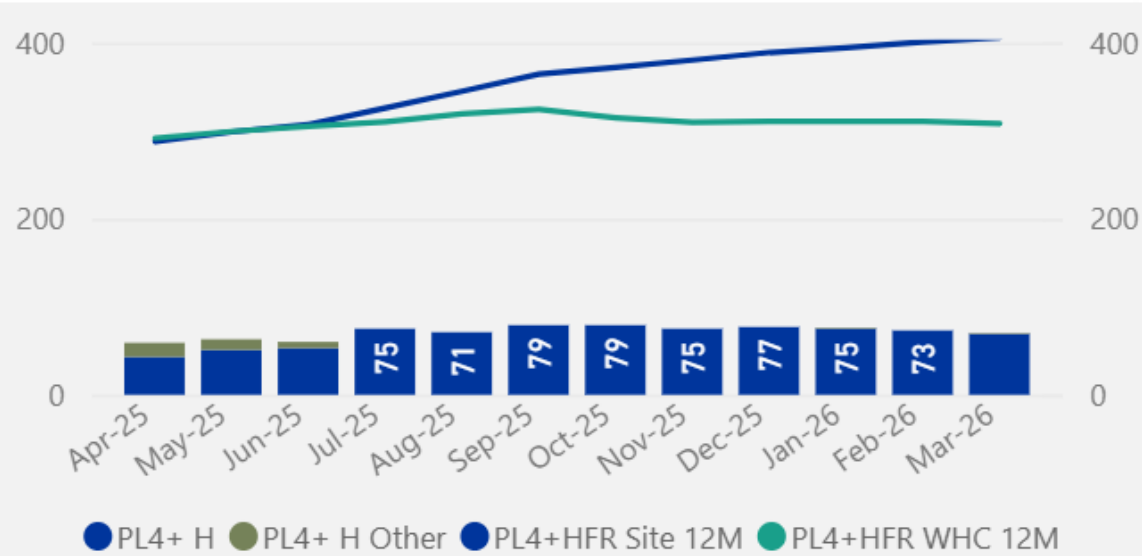
Q1 2026

MCC Health and Safety Performance

- Total Recordable Injury Frequency Rate (TRIFR) 1.9
- Potential Level 4+ Hazards = 675 FY26
- Critical controls verified 100%

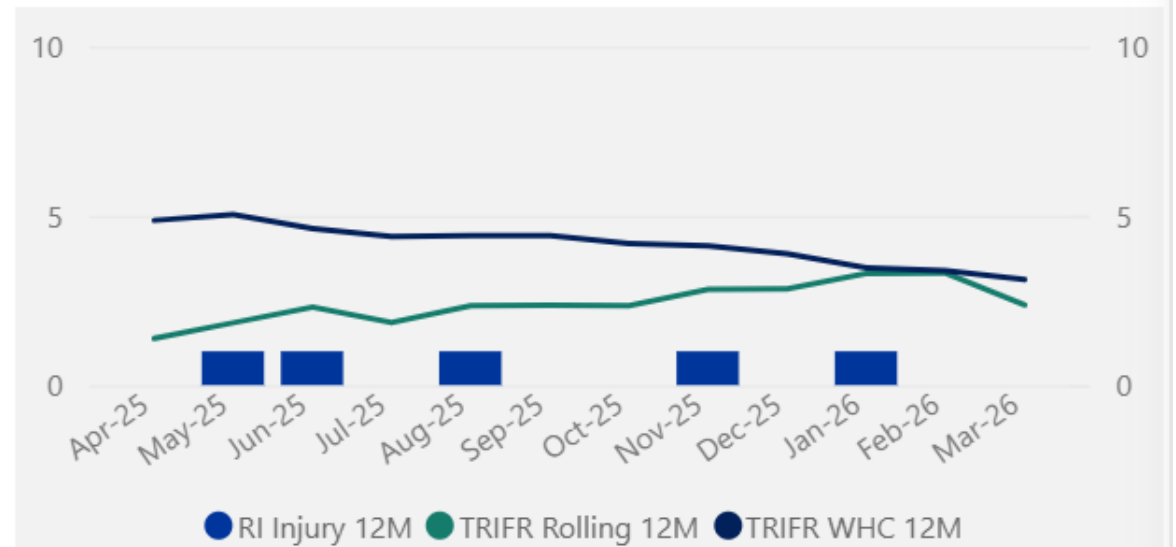
PL4+ Hazards

PL4+H FR (WHC)	PL4+H FR (Site)	PL4+H MTD	PL4+H FYTD
307.8	405.4	70	675



Total Recordable Injuries Freq Rate (TRIFR)

TRIFFR (Site) 12M	TRIFR MTD	TRIFR FYTD
2.4	0.0	1.9



Environmental Monitoring

Summarised for Q1 2026.

Full detail in the Monitoring Report
supplied



Environmental Monitoring

Q1 2026 – Air Quality Monitoring



Depositional Dust

The annual reporting period (12 monthly rolling annual average) remained below the relevant Project Approval (PA 10_0138) criteria of 4g/m²/month for the respective monitoring points.

MONTH	MC1	MC2	MC3	MC4
January	9.9	1.1	3.7	2.8
February	10.4 ^c	1.1	7.6 ^c	1.2
March	4.8 ^c	0.9	1.1	0.7
12 MONTH ROLLING AVERAGE	2.2	1.4	1.9	1.4

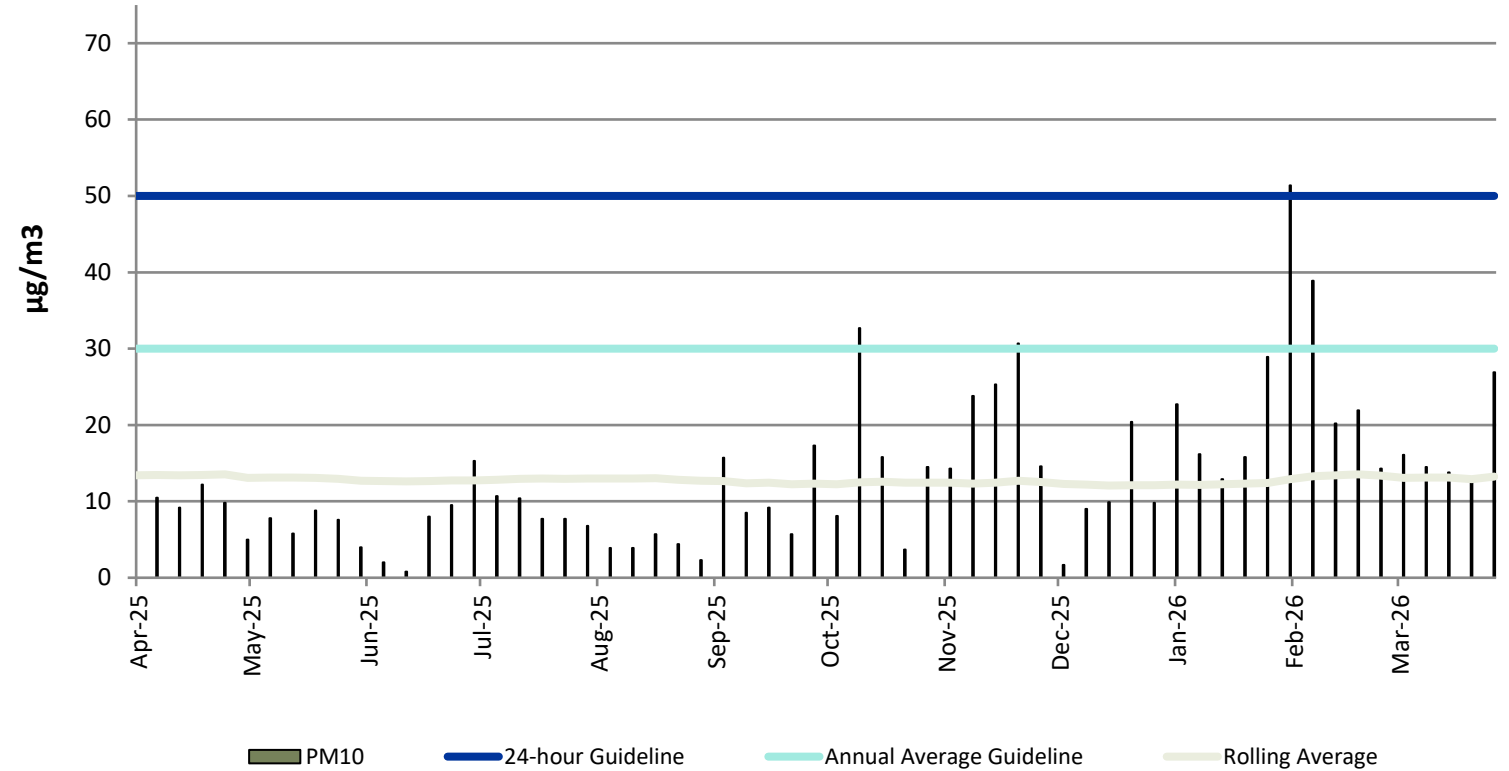
^c samples contaminated by bird dropping, decomposed insects or vegetable matter.

HVAS

High Volume Air Sampler

- The HVAS monitor is located on 'Olivedene'
- The Rolling Annual Average was recorded at **13.2 $\mu\text{g}/\text{m}^3$** , which is below the Annual Average Guideline of **30 $\mu\text{g}/\text{m}^3$** .

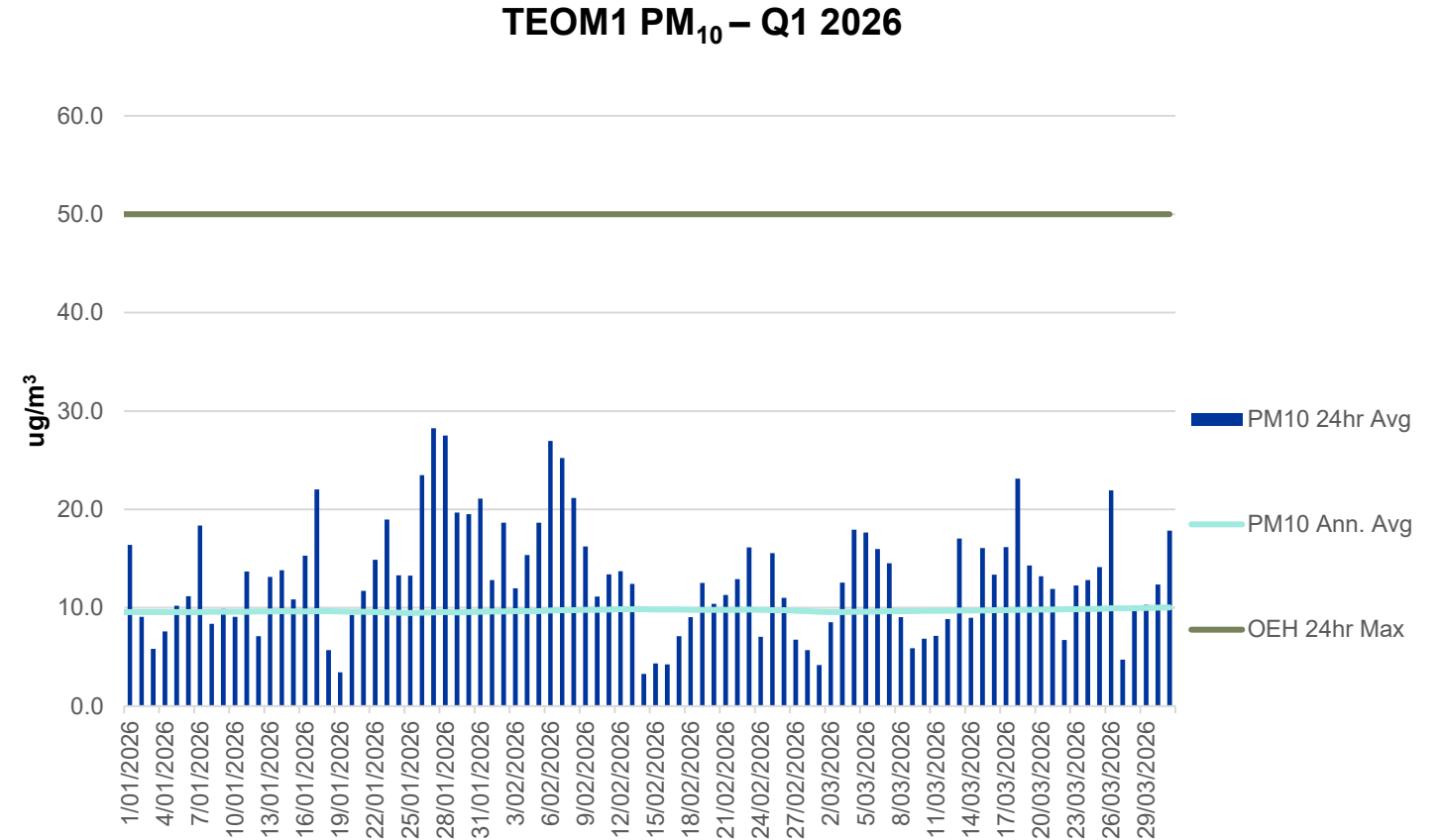
HVAS (PM10) - Olivedene



TEOM 1 (PM10)

Tapered element oscillating microbalance

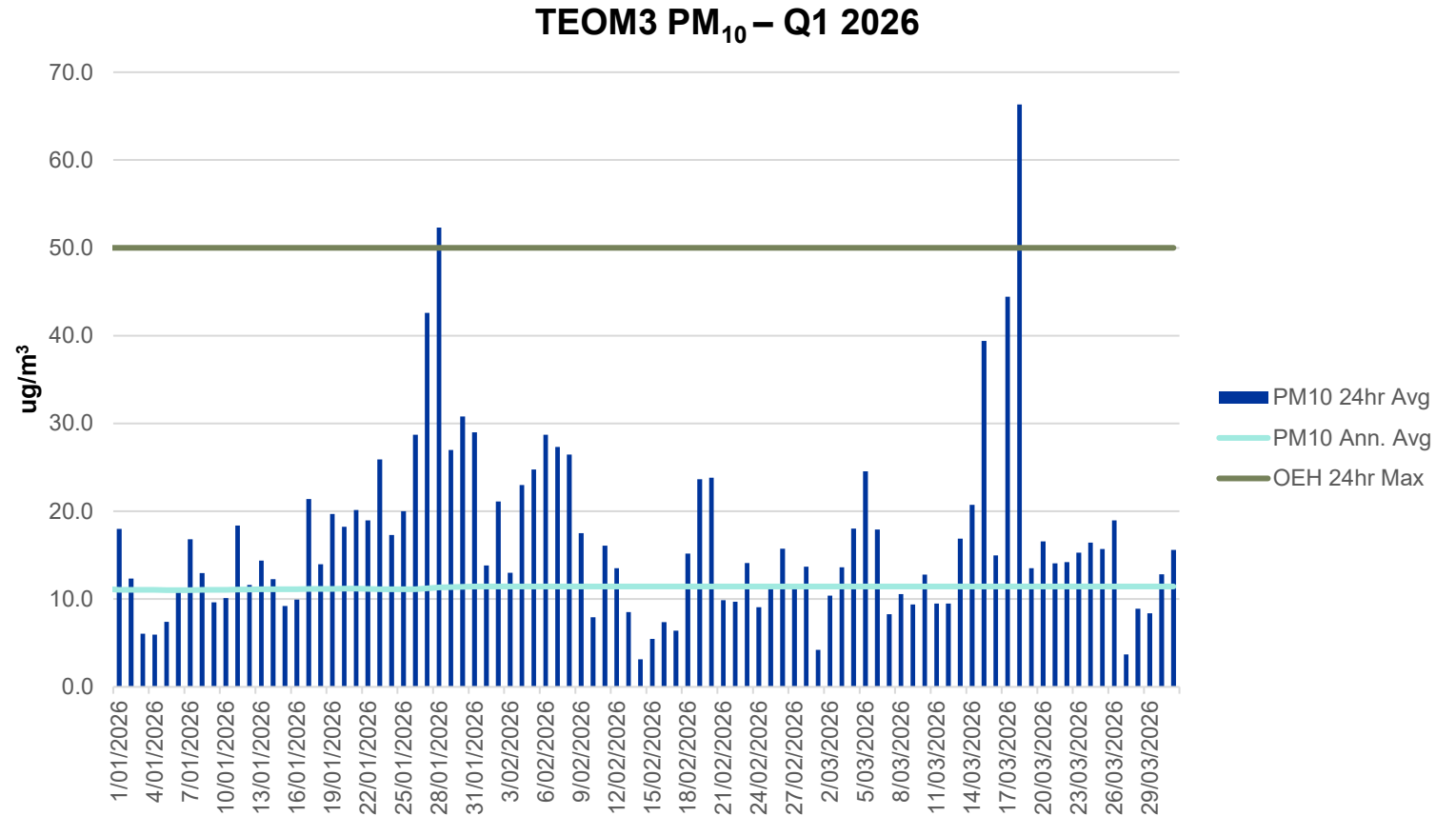
- Publicly available results of TEOM1 available on the EPA website.
- Annual rolling average for TEOM 1 was **10.0 $\mu\text{g}/\text{m}^3$** on the 31st of March 2026 (criteria $30\mu\text{g}/\text{m}^3$).



TEOM 3 (PM10)

Tapered element oscillating microbalance

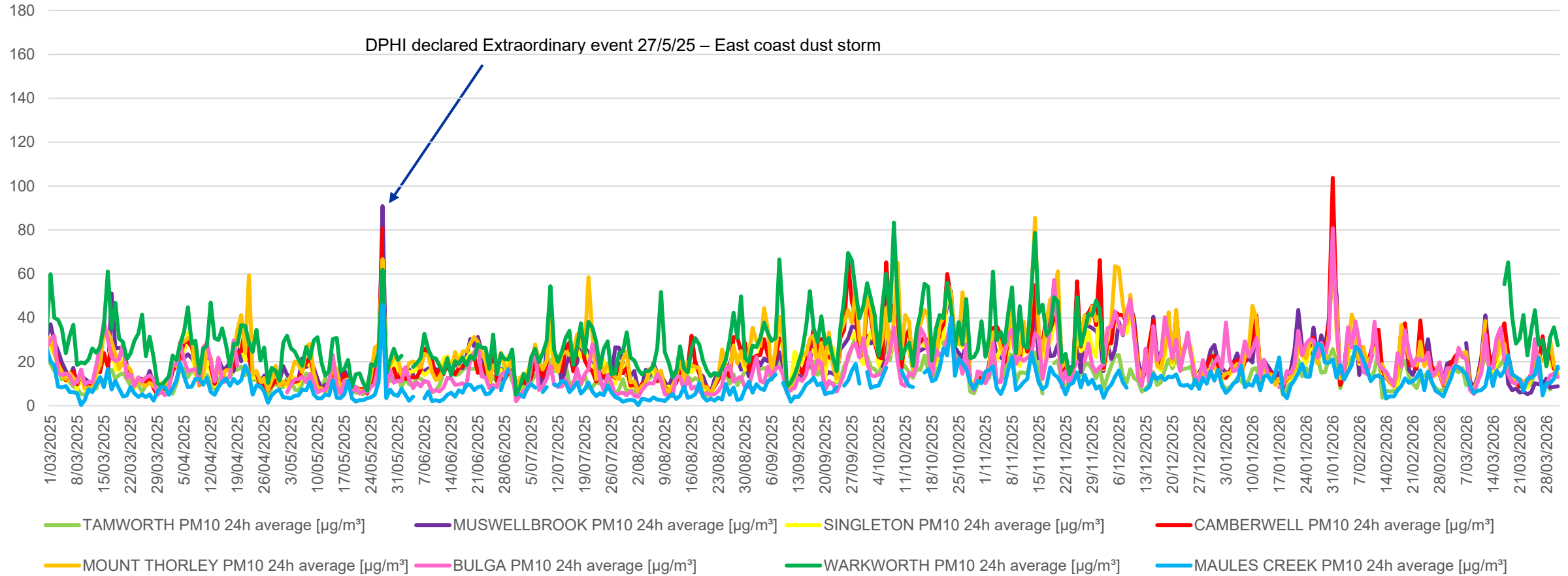
- Annual rolling average for TEOM 3 was **11.4 $\mu\text{g}/\text{m}^3$** on the 31st of March 2026 (criteria $30\mu\text{g}/\text{m}^3$).



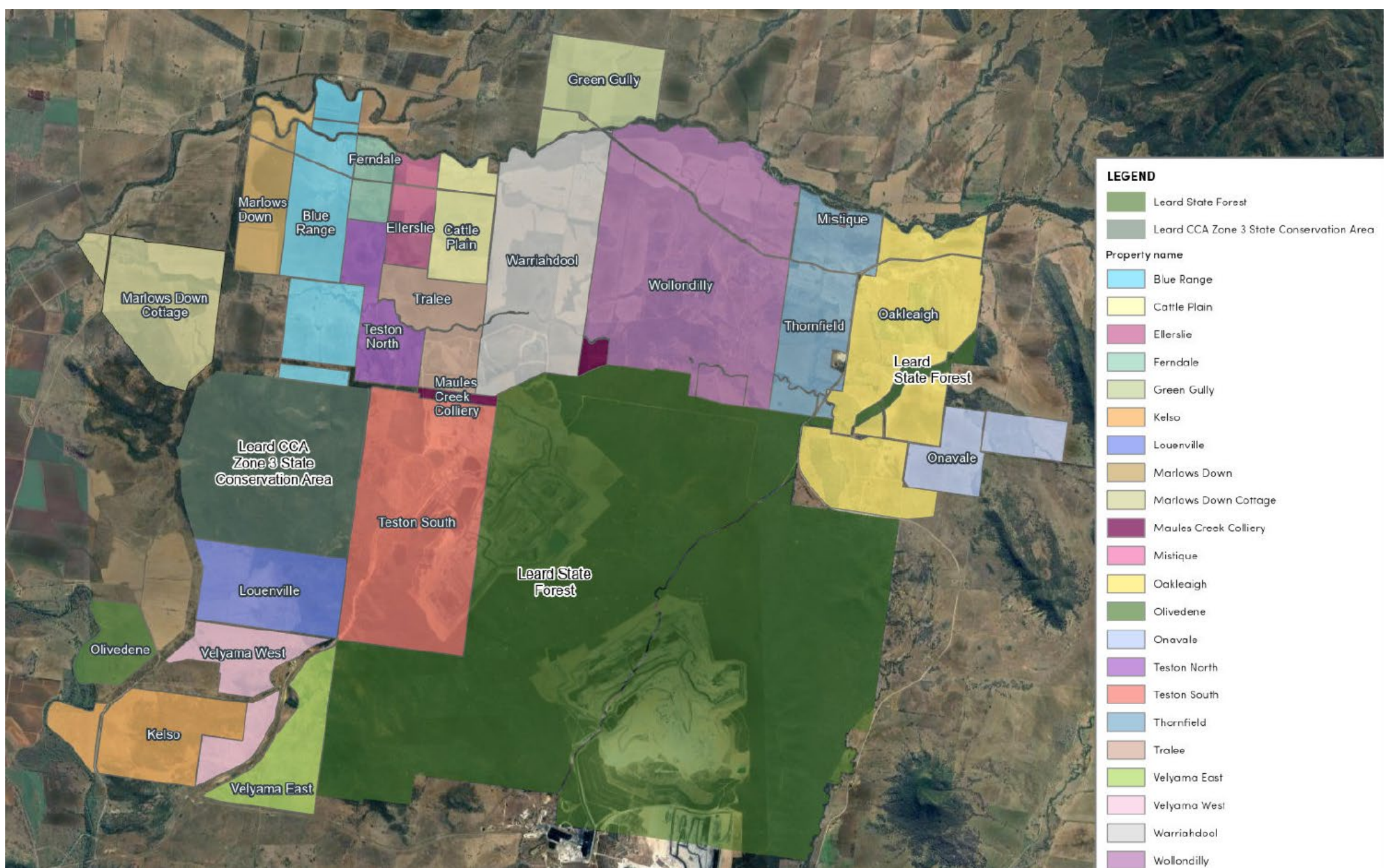
Air Quality Monitoring Rolling 12 Months

Annual Reporting Data 1 March 2025 – 31 March 2026

Regional Air Quality PM10 Comparison



12 monthly	TAMWORTH PM10	MUSWELLBROOK PM10	SINGLETON PM10	CAMBERWELL PM10	MOUNT THORLEY PM10	BULGA PM10	WARKWORTH PM10	MAULES CREEK PM10
Annual Average	13.4	18.9	18.5	19.6	21.4	16.5	29.0	9.8
Max 24hr Ave	80.5	90.9	65.5	166.0	66.7	59.9	75.4	45.9

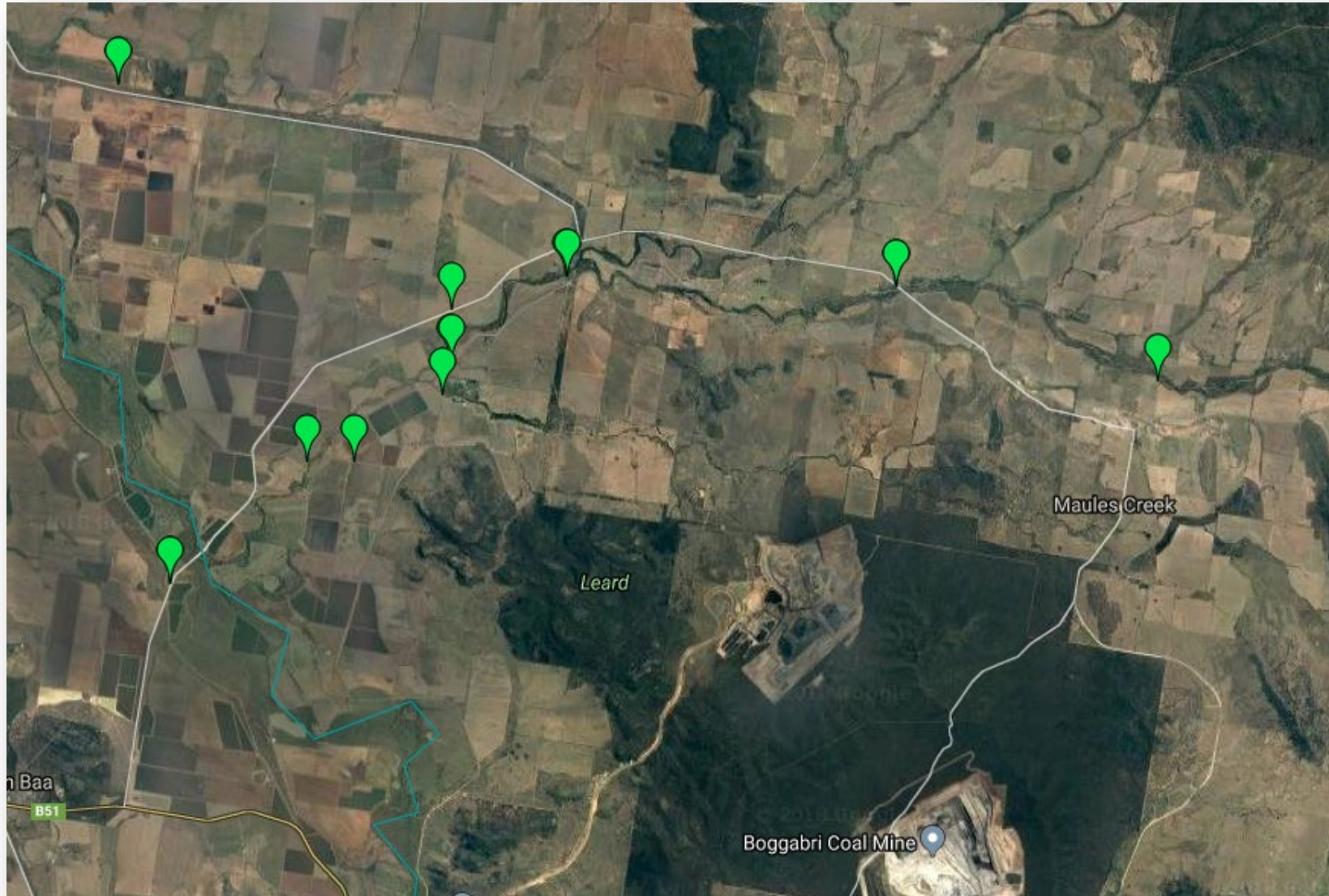


Environmental Monitoring

Q1 2026 – Groundwater

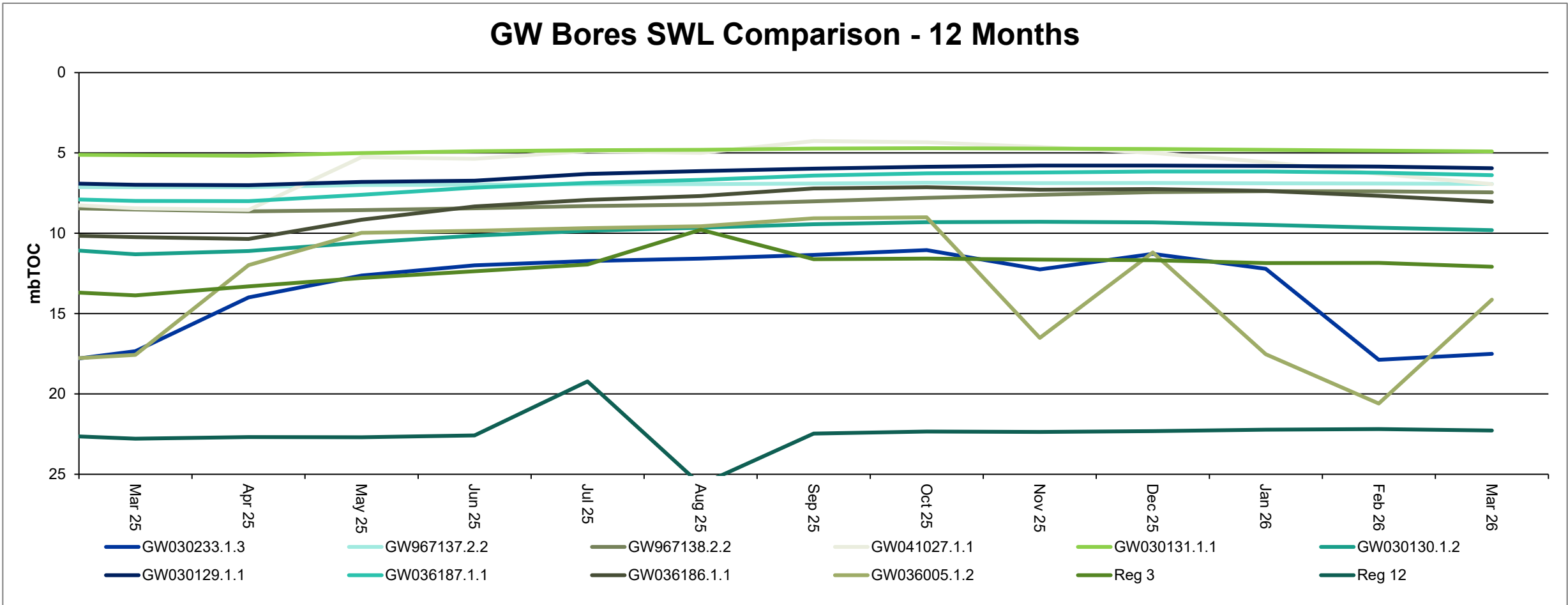


Monitoring Locations



Groundwater Levels

GW Bores SWL Comparison - 12 Months

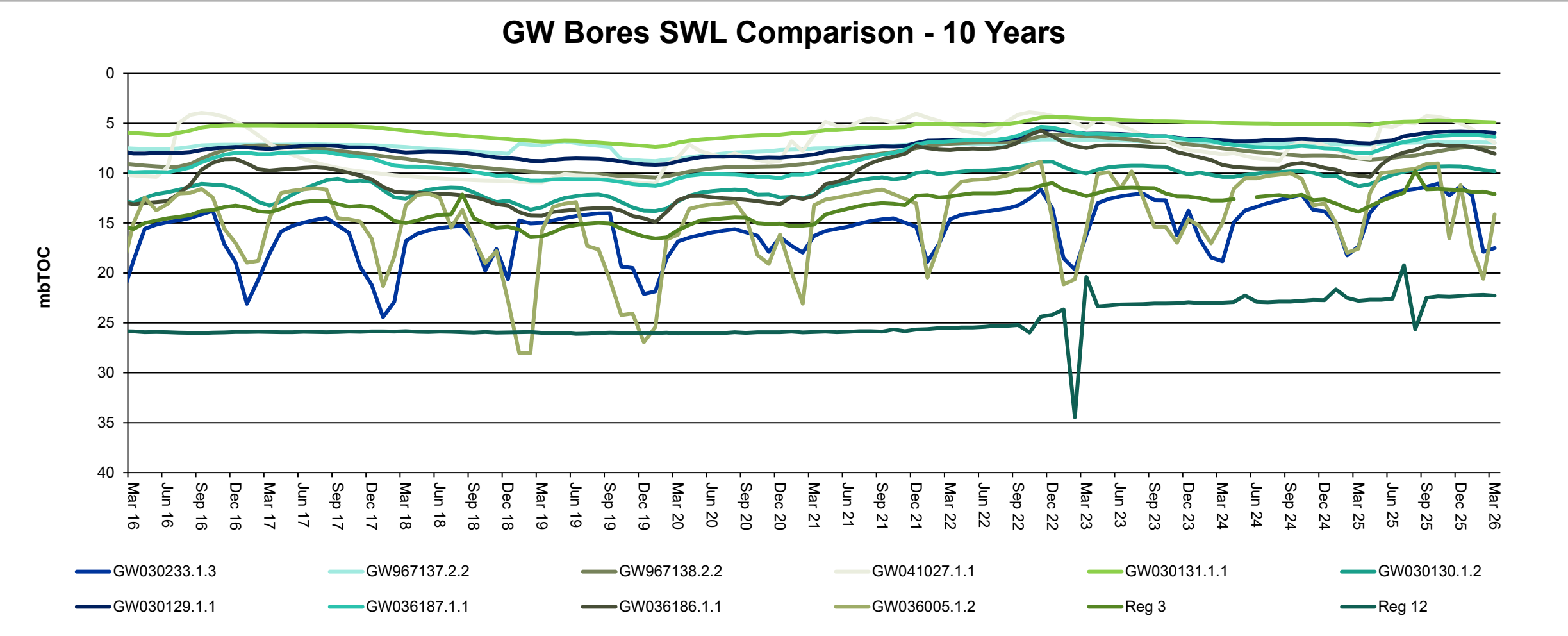


Source: NSW DPI- Water & MCCM monitoring data

* Note Reg12 and Reg3 both within Boggabri Volcanics

Groundwater Levels

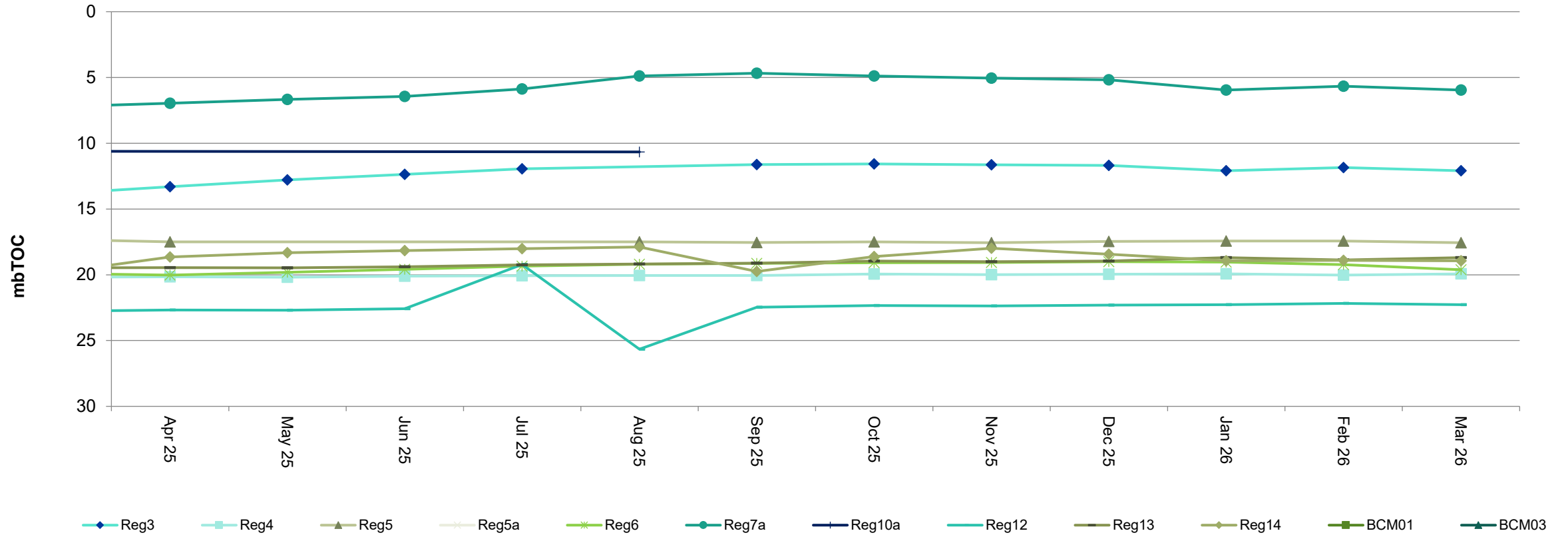
GW Bores SWL Comparison - 10 Years



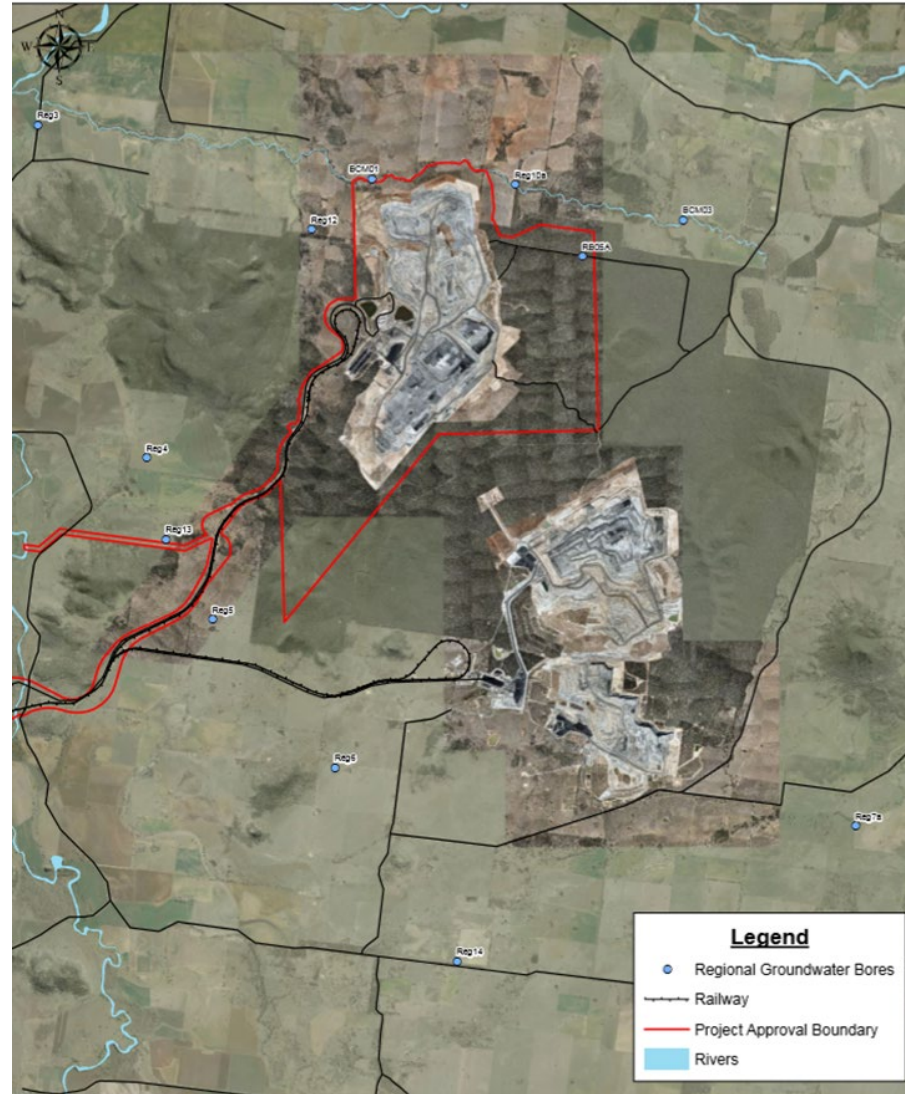
Source: NSW DPI- Water & MCCM monitoring data
 * Note Reg12 and Reg3 both within Boggabri Volcanics

Standing Water Levels

Regional GW - Standing Water Level



Standing Water Levels



Environmental Monitoring

Q1 2026 – Biodiversity



Biodiversity Management

Feral Animal Management

Most recent routine Whitehaven Biodiversity Feral Animal Control program (January to March 2026) results were:

- 965 out of total 1,596 feral pigs removed were from the Maules Biodiversity properties;
- 457 out of the total 691 feral goats removed were from the Maules Biodiversity properties;
- 105 out of total 210 Canid Pest Ejectors (1080) triggered, or foxes removed were from the Maules Biodiversity properties.

Weed Control

During January to March 2026 the following weed control was undertaken via spot spraying/jetting on the Maules Biodiversity Properties:

- 36ha of Woody Weeds (Sweet Briar, Blackberry, Tiger Pear and Prickly Pear) were sprayed.
- 21.8ha of Grasses (Coolatai Grass, African Lovegrass and Rhodes Grass) were sprayed.
- 18.2ha of Broadleaf Weeds such as Bathurst Burr, Noogoora Burr and Cobblers Peg were sprayed.
- 267ha of tracks sprayed as part of the track maintenance.



Biodiversity Management

Other Biodiversity Projects and Works Undertaken in Q1 2026

- Ongoing Annual Firebreak Track Maintenance Program
- Ongoing Pest Animal Management Program
- Ongoing Targeted Weed Spraying of seasonal weeds
- Quarterly Threatened Flora Inspections
- Continued Annual Fauna Monitoring
- Completed Heritage Management Construction works
- Commenced Annual Ecological Burn Program

Upcoming Biodiversity Projects and Works for Q2 2026

- Continue Pest Animal Management Program April to June 2026
- Continue Seasonal Weed Control Programs
- Continue Firebreak Track Maintenance Program
- Continue Property Development for Track and Fencing Works
- Continue Threatened Flora Translocation Program maintenance
- Continue Annual Ecological Burn Program
- Commence Revegetation Tree Planting



Project Continuation

CCC Meeting Q1 2026

Environmental Assessment Update

- Whitehaven responded to public, organisations and government submissions within a Submissions Report in October 2025 (available at the DPHI Major Projects Portal; link: <https://www.planningportal.nsw.gov.au/major-projects/projects/maules-creek-continuation-project>)
- Following this, some government agencies provided additional feedback on the Submissions Report which Whitehaven providing responses in late 2025 and Q1 2026.
- Additional groundwater monitoring bores are being established on Whitehaven owned land to support future groundwater monitoring. The drilling program will continue over coming weeks.



EIS Approval Process Update

- Scoping Report lodgement – [Complete](#)
- Secretary’s Environmental Assessment Requirements (SEARs) issued by DPHI on 26 October 2023 – [Complete](#)
- Site Verification Certificate granted over the proposed Mining Lease Application area – [Complete](#)
- EPBC Referral lodged on 15 July 2024 – [Complete](#)
- EIS lodgement May 2025 – [Complete](#)
- EIS exhibition occurred in June to August 2025 via DPHI Major Projects Portal – [Complete](#)
- Whitehaven to respond to all submissions via Response to Submissions report to be lodged via DPHI Projects Portal – [Complete](#)
- Whitehaven addressing additional agency comments on the Submissions Report – [Complete](#)
- Whitehaven to submit remaining information to DPHI and DPHI to commence ‘Assessment’ phase – [Complete](#)
- DPHI undertake their assessment of the Project (including agency feedback and input) – Ongoing
- DPHI refer the MCCP to the IPC



Community

Q1 2026



Aboriginal Representative on the CCC

- Advertisements continue to run in the Gunnedah Times and Narrabri Courier
- Advertisements continue to be displayed on the MCC website
- No applications have been forthcoming
- Please direct anyone who is interested to apply through the website or through application to the Chair.

Community

[MAULES CREEK CCC MEMBER DETAILS AND CONTACTS](#) →

Community Consultative Committee applications

The Maules Creek Community Consultative Committee (CCC) is looking for a mix of people who live locally or are members of a local community or stakeholder group (eg social, environment, Aboriginal or industry) to contribute constructively to committee discussions, attend around four meetings a year, and communicate information about the mine's social and environmental operations between the committee and the broader community. Committee membership is voluntary. Whitehaven employees and contractors are not eligible for appointment to the committee as a community representative.

To make an Expression of Interest to join the Maules Creek CCC, please review the criteria, complete an application form and return it to the independent chairperson of the CCC at maulescreekcoalccc@gmail.com.

↓ [COMMUNITY REPRESENTATIVE NOMINATION FORM](#)

↓ [OTHER STAKEHOLDER GROUP REPRESENTATIVE NOMINATION FORM](#)

EXPRESSION OF INTEREST

NOMINATIONS ARE OPEN FOR APPOINTMENT OF TWO COMMUNITY MEMBERS TO THE MAULES CREEK COAL MINE COMMUNITY CONSULTATIVE COMMITTEE

We are seeking nominations from people who live locally, or are members of local community or stakeholder groups having environmental interests or who are Aboriginal to fill two positions on our Maules Creek Coal Community Consultative Committee.

Community consultative committees play an important role in ensuring proponents engage with the community and stakeholder groups on approved state significant projects.

These committees provide a forum for open dialogue between the proponent and representatives of the local community, stakeholder groups and local councils on issues directly relating to the project.

Please note that employees of and contractors to Maules Creek Coal are not eligible for appointment to the committee as a community representative.

Your role as a committee member will be voluntary.

You will have the opportunity to contribute constructively to committee discussions, attend about four meetings a year, and communicate information about the mine's social and environmental operations between the committee and the broader community.

If you would like to apply, please address the selection criteria that can be found in the nomination form at whitehavencoal.com.au/our-business/our-projects/maules-creek-mine/ under the Community tab. Nominations are open until the 19th September 2024.

Contact the Independent Chair, Mike Silver 0427 723 747 for more information.

Completed nomination forms must be sent to the independent chairperson of the Community Consultative Committee at: maulescreekcoalccc@gmail.com or PO Box 37 Gunnedah NSW 2380.

Community Investment

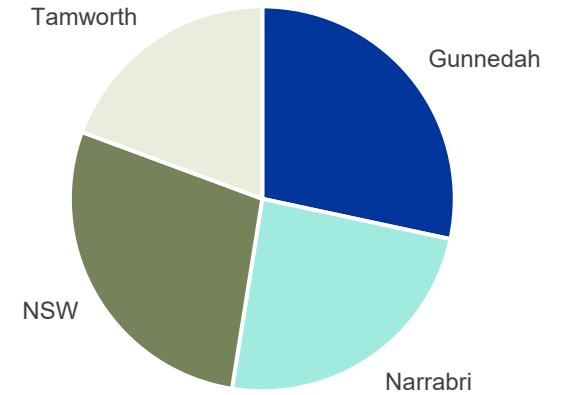
\$100,982 provided to 16 organisations



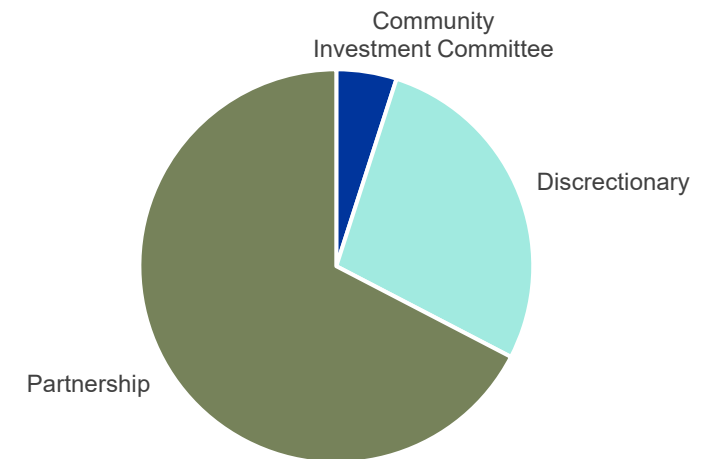
Organisations included:

- Weeks of Speed Gunnedah
- Narrabri High School
- Boggabri Drivers Campfire
- Maules Creek Campdraft
- Tamworth Aboriginal Medical Service
- Manilla Show Society

BY REGION



BY FUNDING SOURCE



Thank you

